


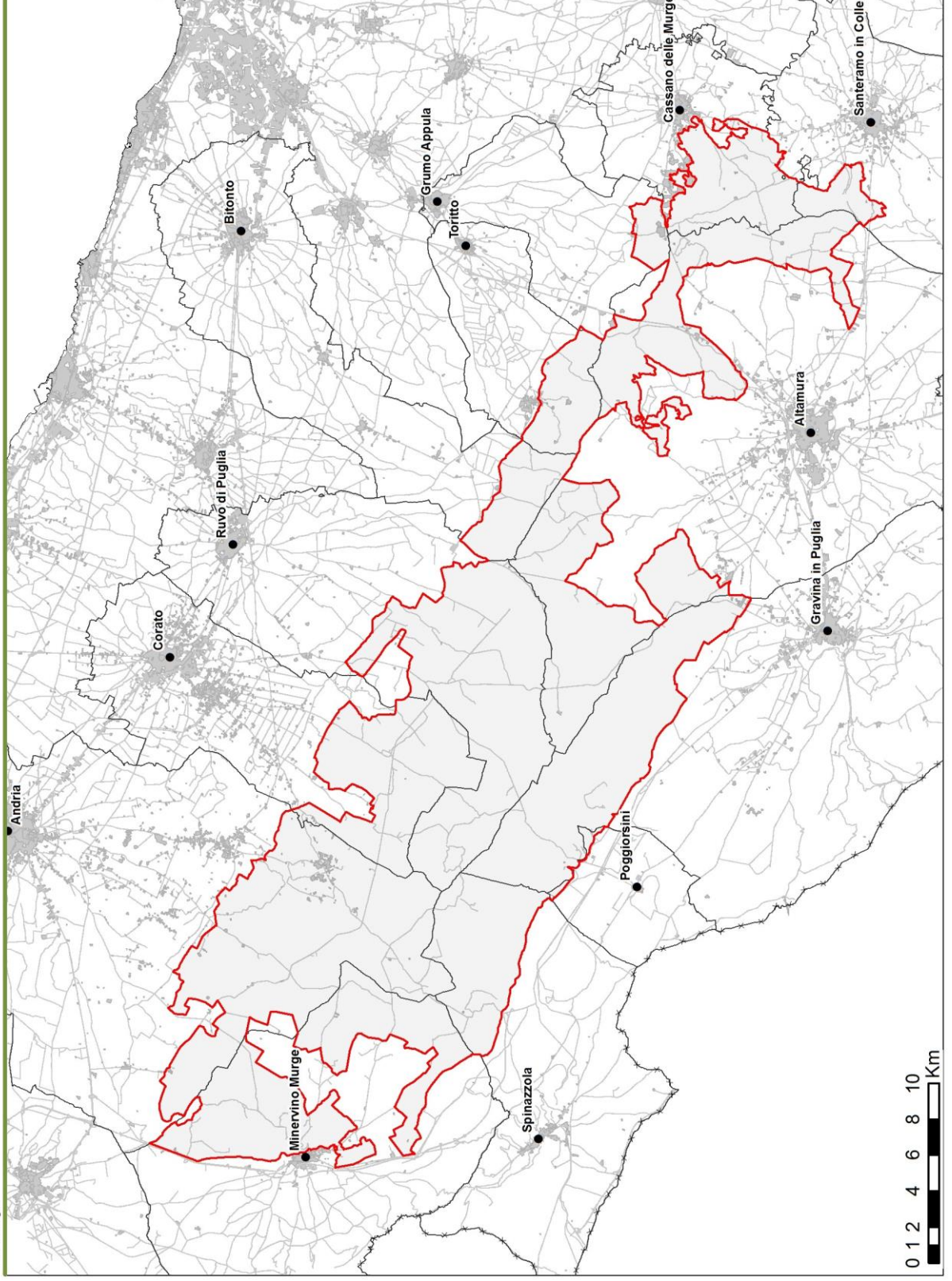
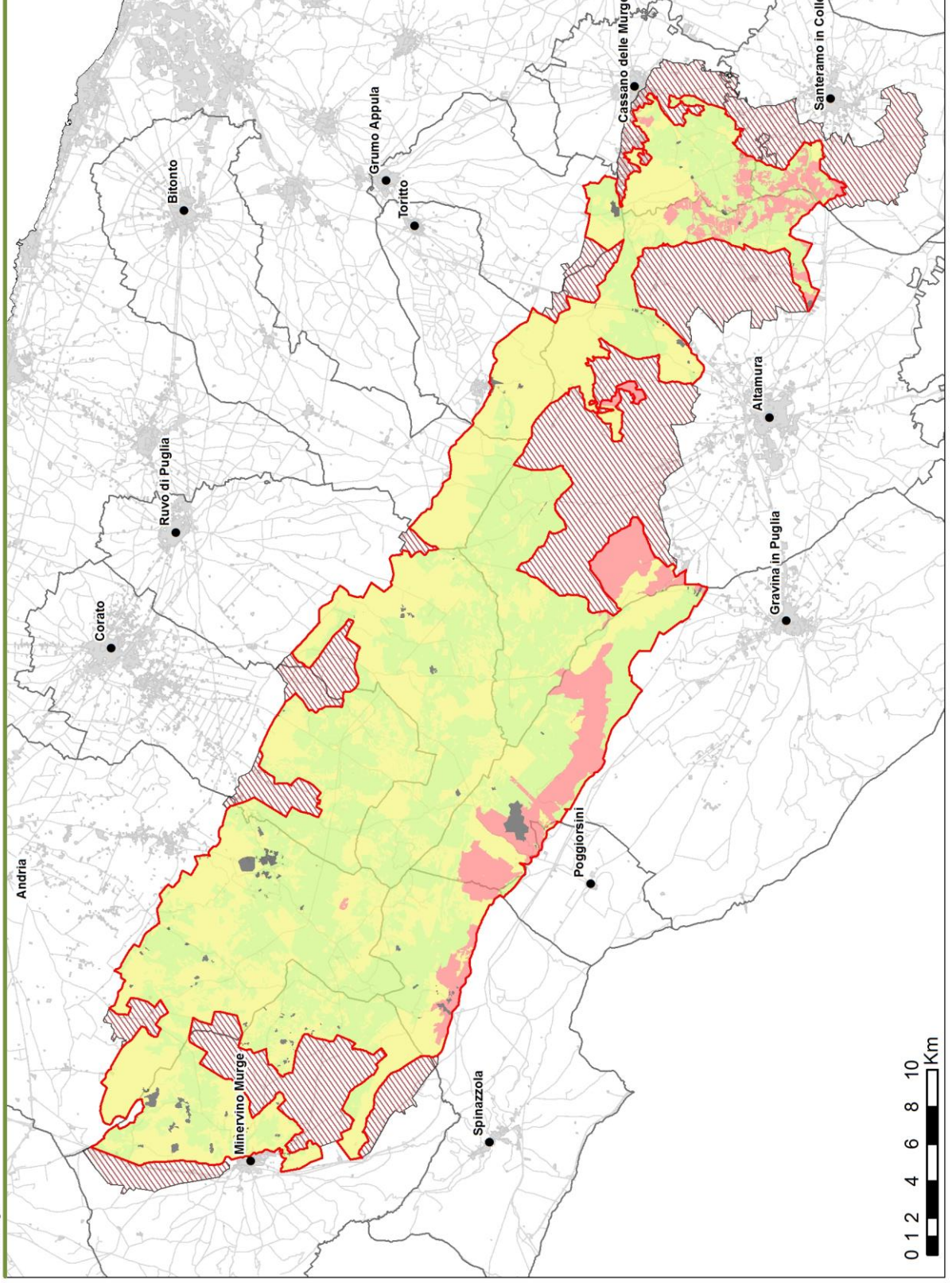











Legenda

-  Confine del Parco Nazionale dell'Alta Murgia
-  Confine regionale
-  Confine comunale


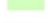



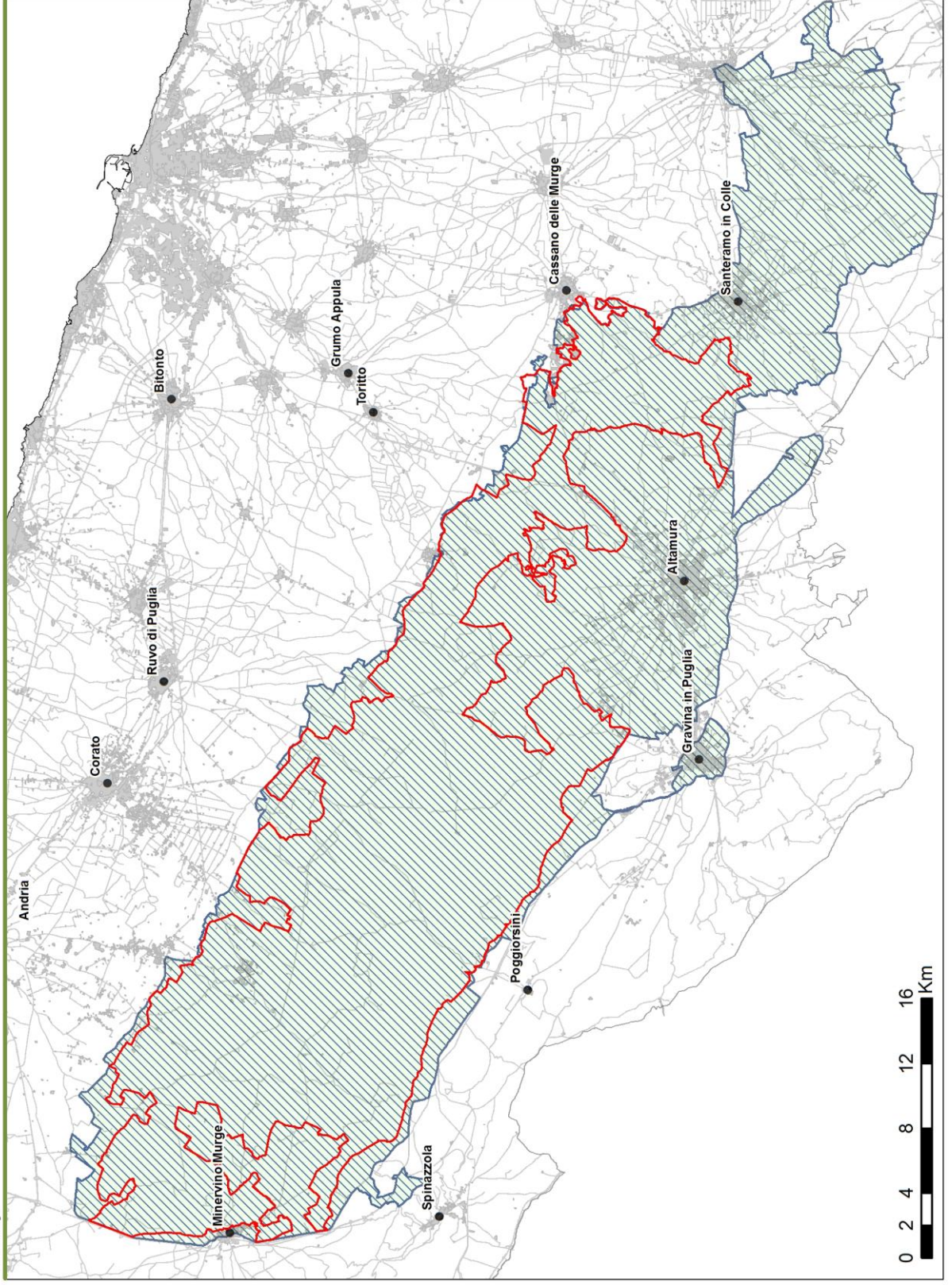


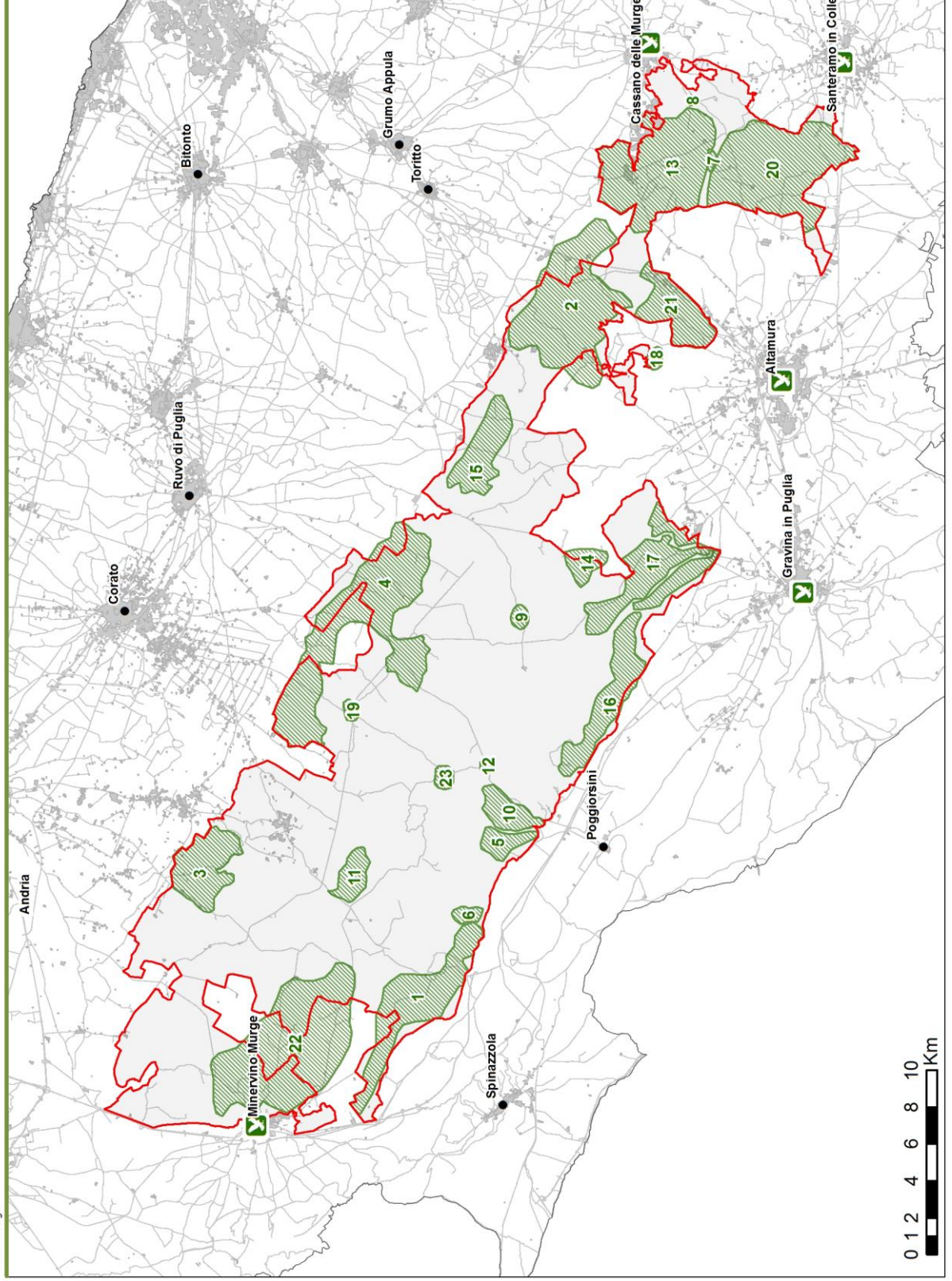
Legenda

-  Confine del Parco Nazionale dell'Alta Murgia
-  Confine comunale
-  Zona A
-  Zona B
-  Zona C
-  Zona D
-  Aree contigue

Legenda

-  Confine del Parco Nazionale dell'Alta Murgia
-  ZSC - Murgia Alta
-  ZPS - Murgia Alta






Legenda

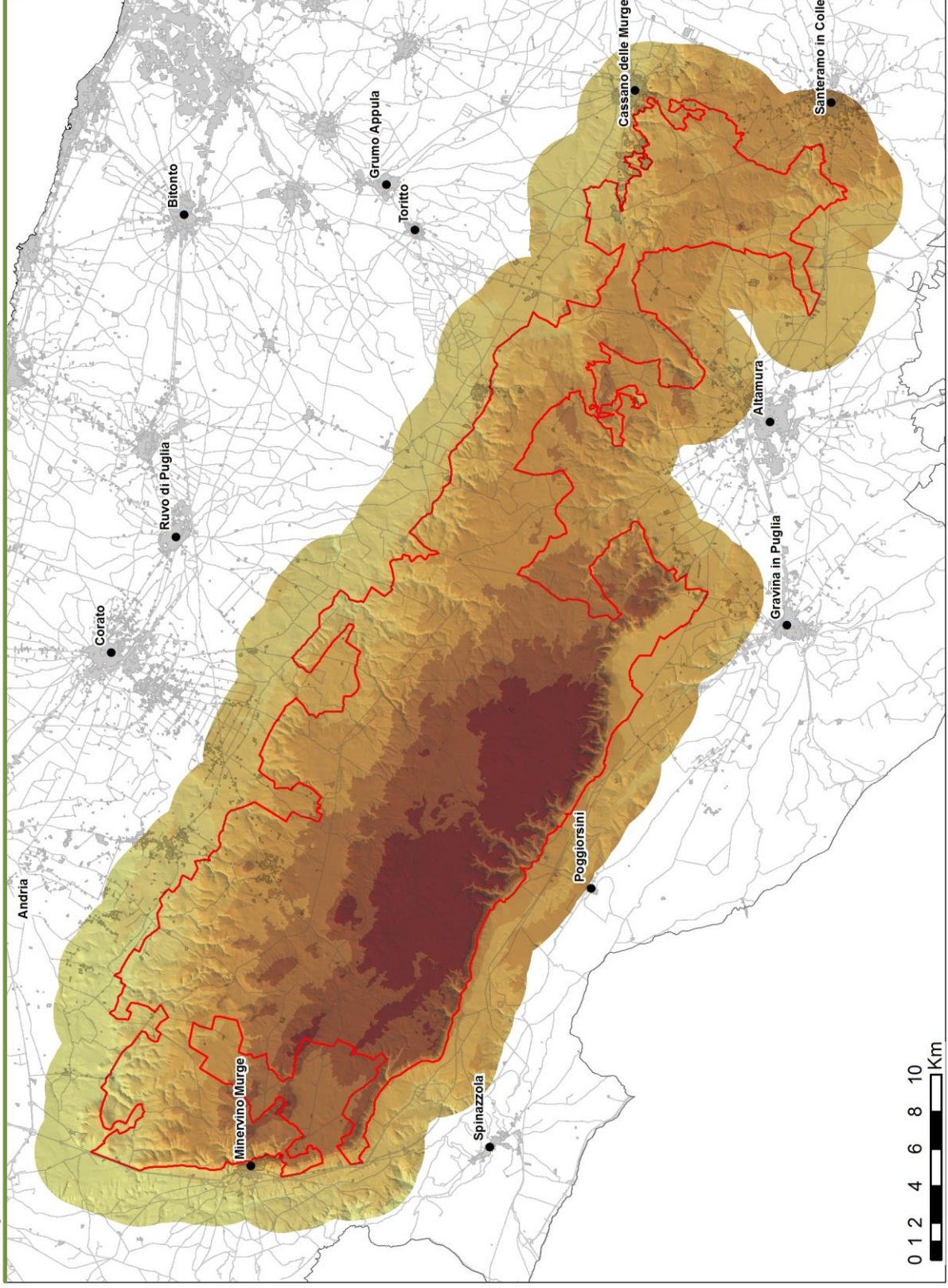
 Confine del Parco Nazionale dell'Alta Murgia

 Aree sensibili per la fauna

1. Acquatetta
2. Boschi Quarto-Resega
3. Bosco di Santo Spirito
4. Bosco Scoparella e dei Fenicia
5. Garagnone
6. Giberna
7. I Vuotani
8. Lago Battaglia
9. Lago Cupo
10. Lama Torta
11. M. Savignano
12. Masseria Trullo
13. Mercadante
14. Murgia Crocetta
15. Murgia del Ceraso
16. Murgia di Lamapera
17. Pulicchio e rimboschimenti associati
18. Pulo di Altamura
19. San Magno
20. Steppe Altamura, Santeramo, Cassano
21. Steppe Gravina e Altamura
22. Steppe Minervino
23. Iaverna Nuova

 Colonie di Falco naumanni (Falco grillato)



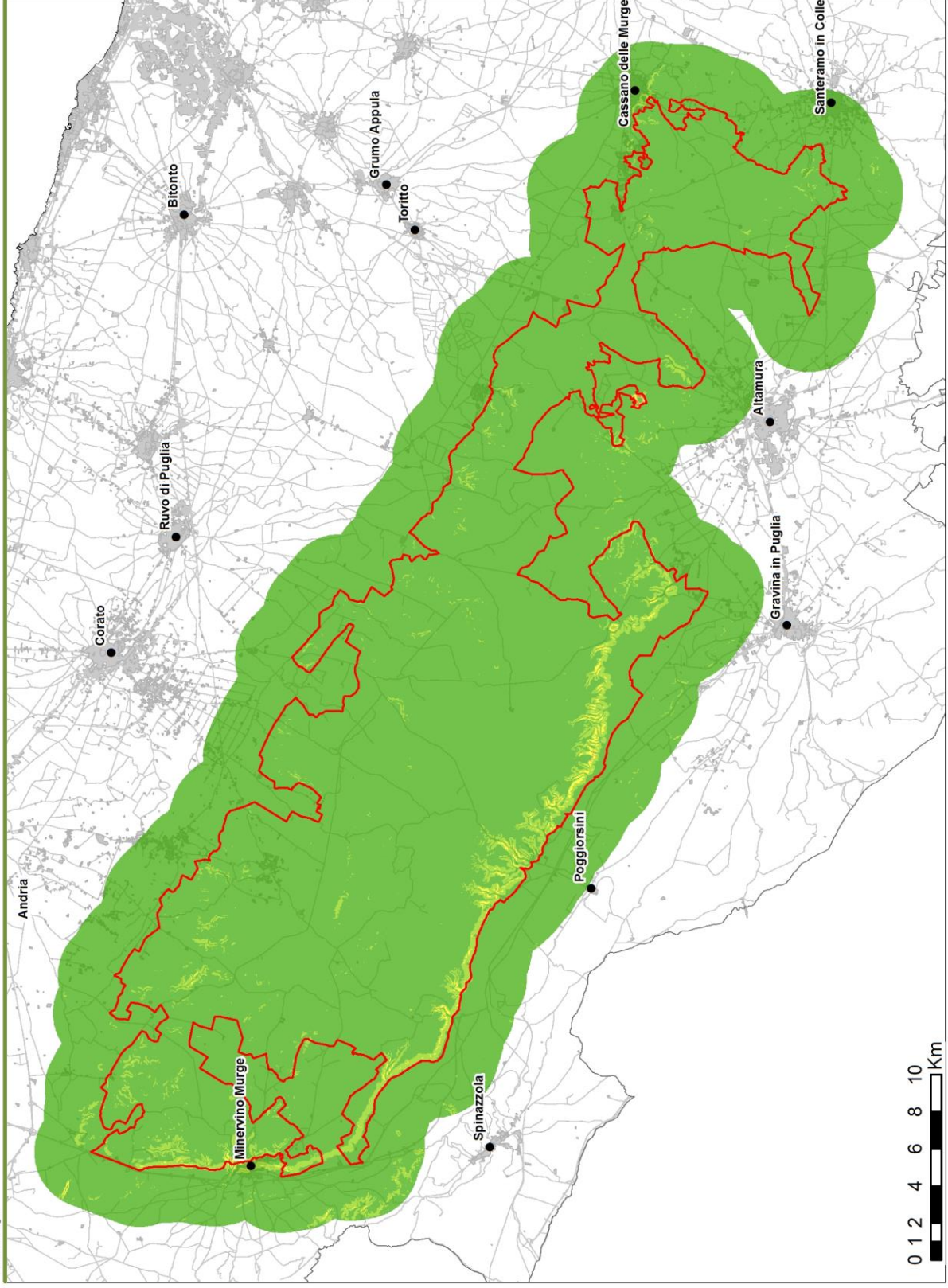


Legenda

— Confine del Parco Nazionale dell'Alta Murgia






- > 600 m
- 550 - 600 m
- 500 - 550 m
- 450 - 500 m
- 400 - 450 m
- 350 - 400 m
- 300 - 350 m
- < 300 m

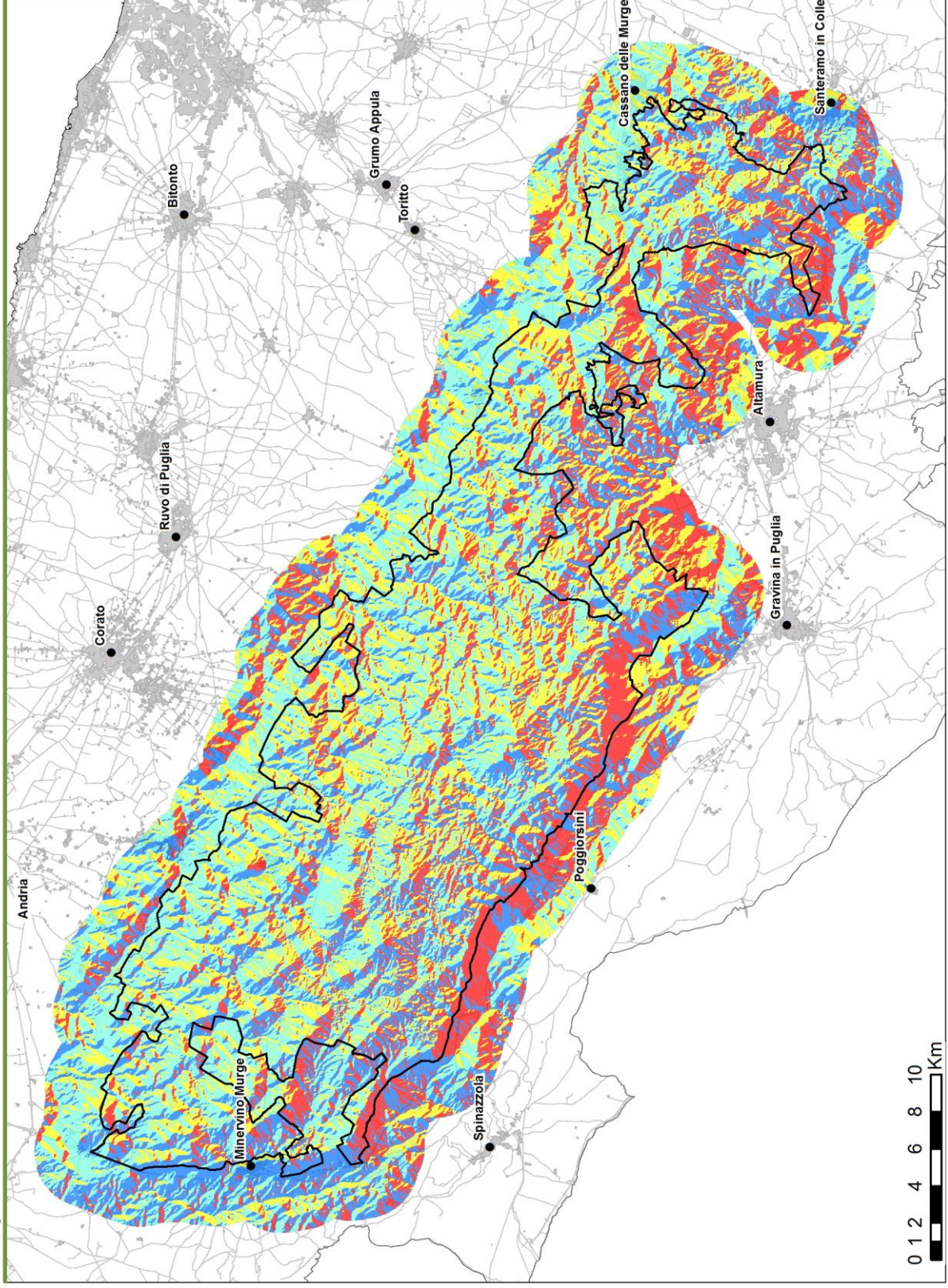




Legenda

— Confine del Parco Nazionale dell'Alta Murgia

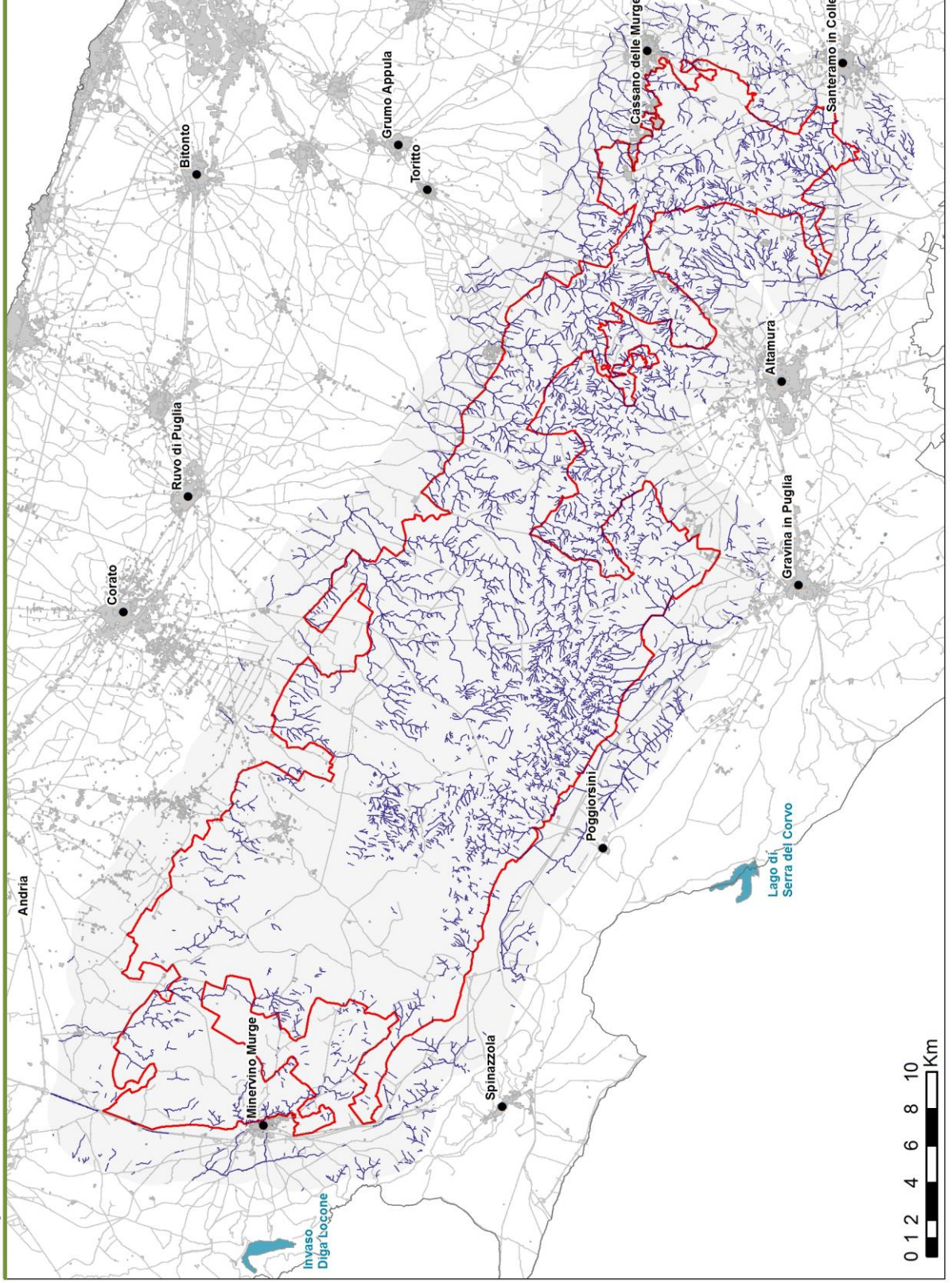
-  I classe - 0-20%
-  II classe - 20-40%
-  III classe - 40-60%
-  IV classe - 60-80%
-  V classe - 80-100%






Legenda

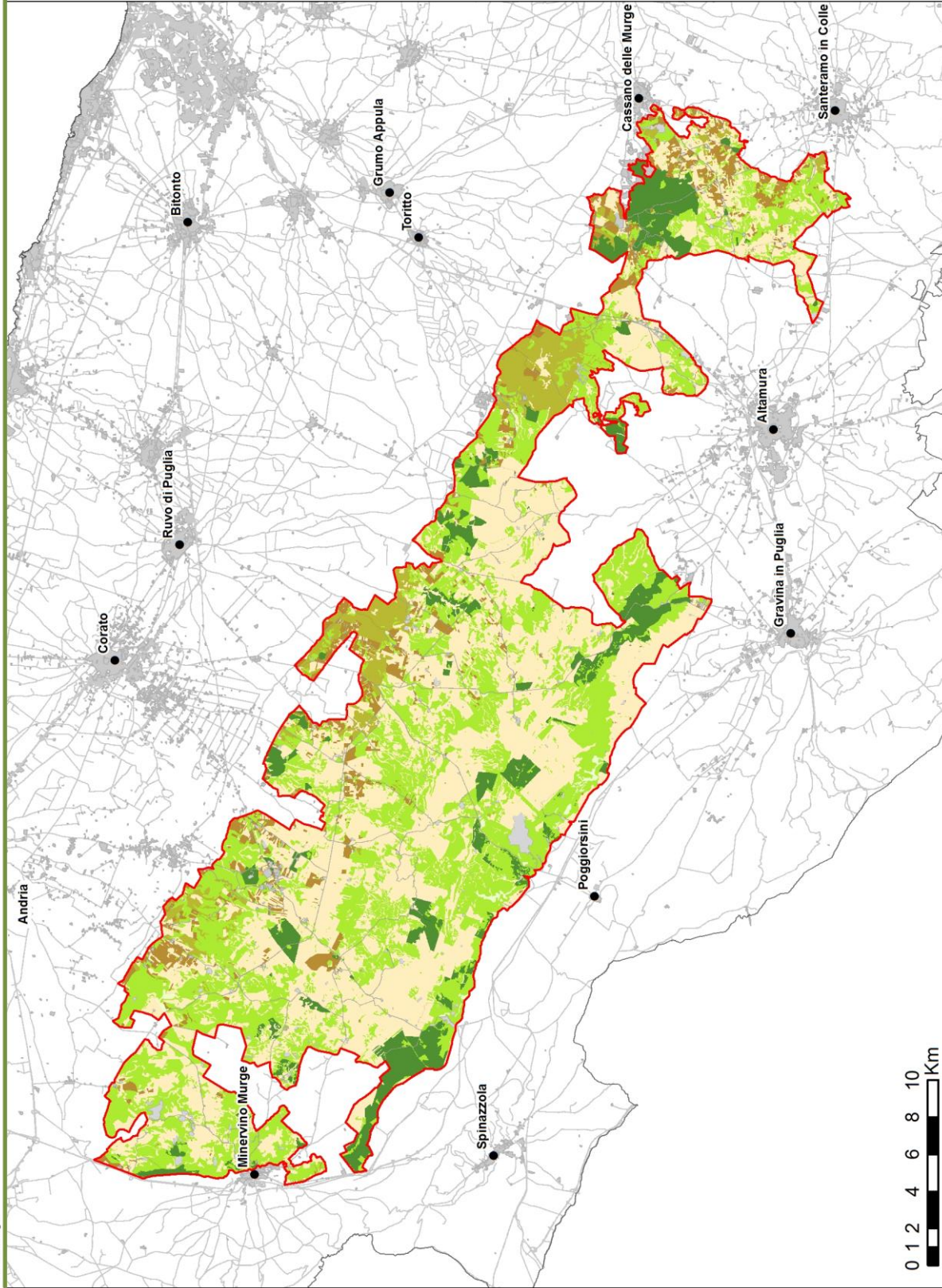
— Confine del Parco Nazionale dell'Alta Murgia

- Piano
- Nord
- Sud
- Est
- Ovest



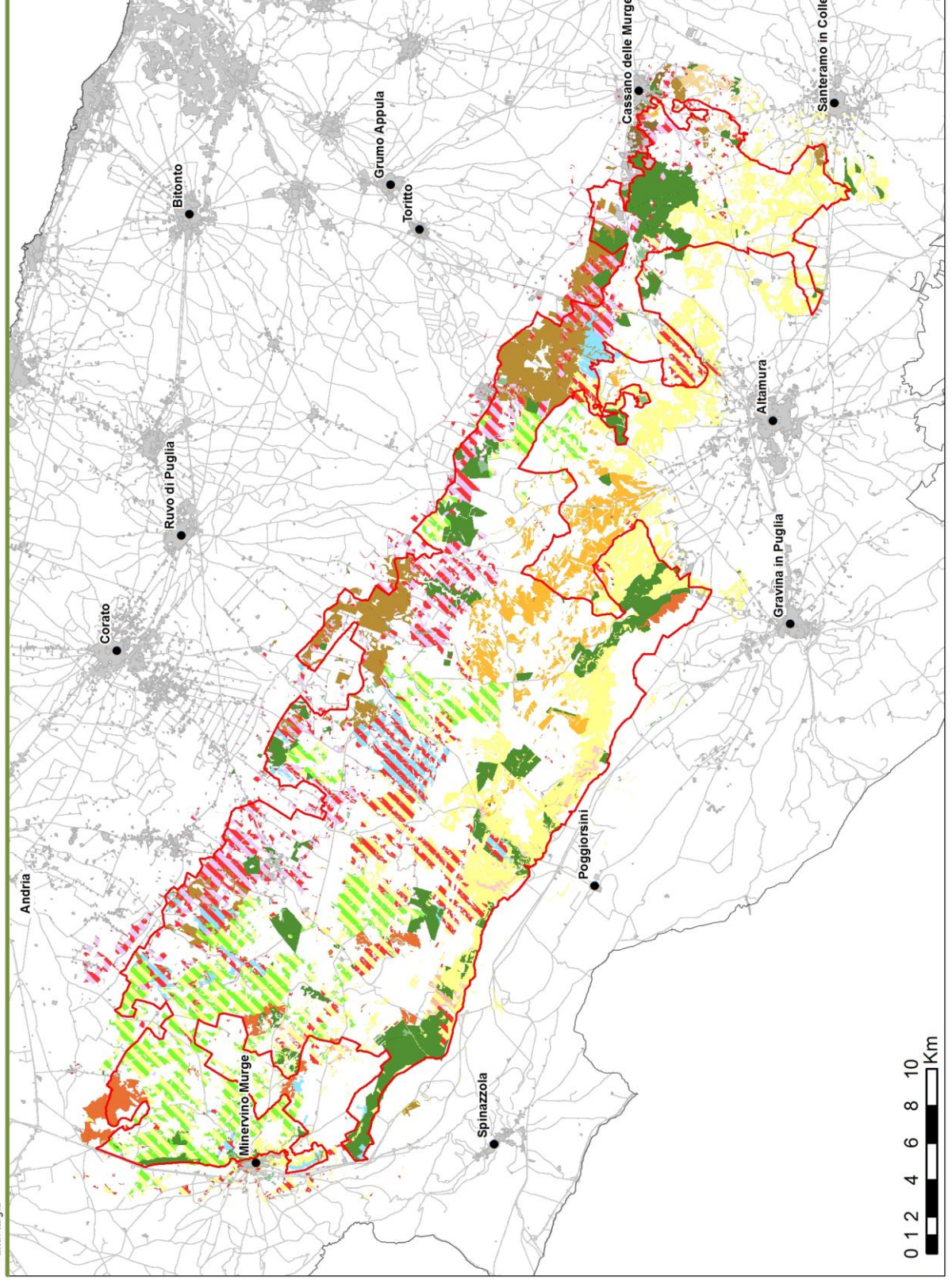
Legenda

-  Confine del Parco Nazionale dell'Alta Murgia
-  Idrografia superficiale
-  Laghi e bacini artificiali
















Legenda

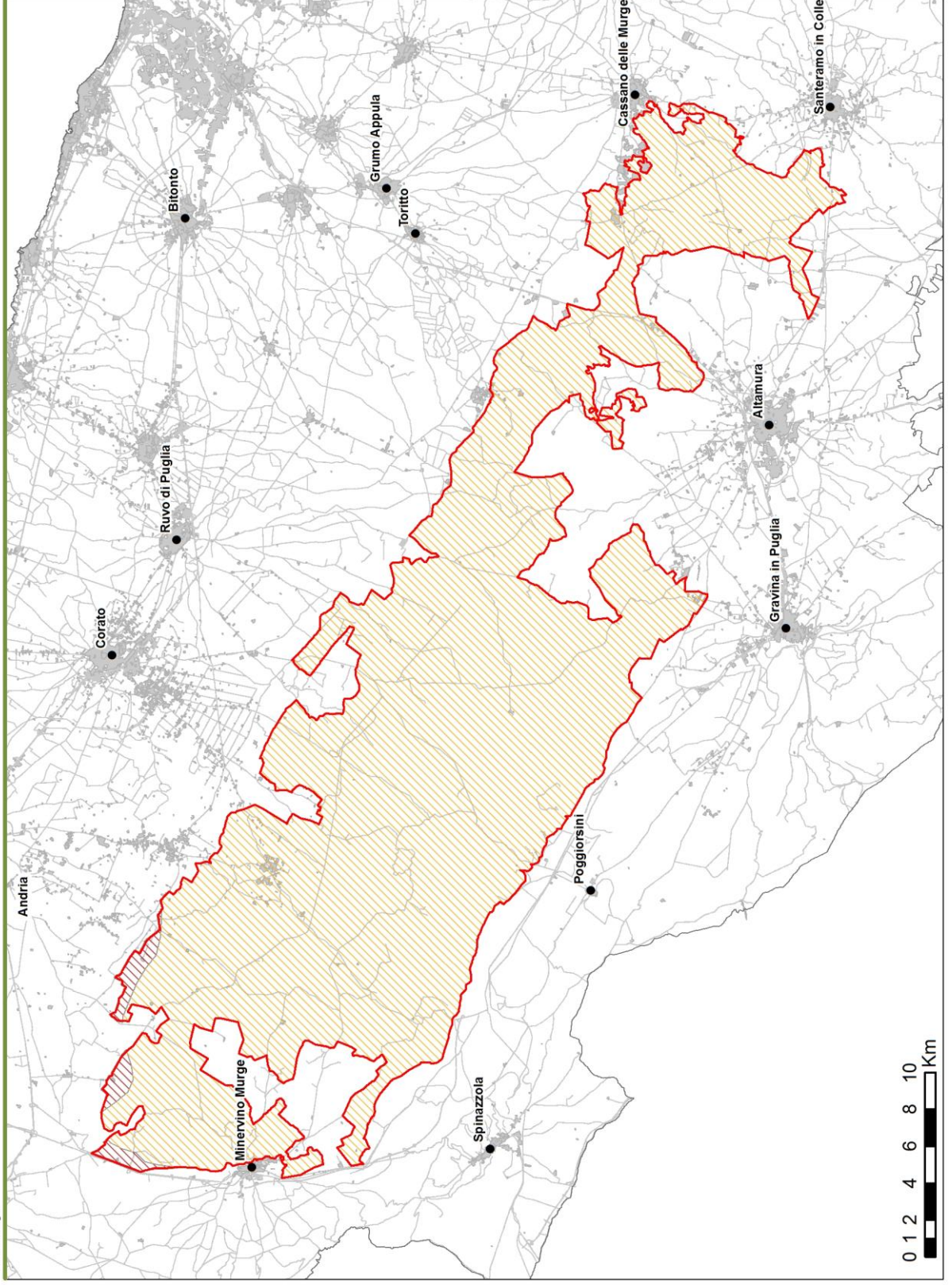
- Confine del Parco Nazionale dell'Alta Murgia
- Superfici artificiali
- Seminativi
- Colture permanenti
- Zone agricole eterogenee
- Boschi di latifoglie
- Rimboschimenti di conifere
- Zone con vegetazione arbustiva/erbacea
- Zone aperte con vegetazione rada o assente





Legenda

-  Confine del Parco Nazionale dell'Alta Murgia
-  Vegetazione delle rupi calcaree mediterranee
-  Prateria a *Stipa austroitalica* ssp. *austroitalica*
-  Prateria a *Stipa austroitalica* ssp. *austroitalica* in mosaico con garighe ed *Euphorbia spinosa*
-  Prateria a *Stipa austroitalica* ssp. *austroitalica* in mosaico con lande ad *Urginea maritima* ed *Asphodelus microcarpus*
-  Prateria a *Stipa bromoides* e *Carex hallerana* in mosaico con lande ad *Urginea maritima* ed *Asphodelus microcarpus*
-  Prateria a *Stipa bromoides* e *Carex hallerana* in mosaico con vegetazione camefitica e nanofanerofitica della *Rhamno catharticae-Prumetea spinosae*
-  Prateria alberate a *Stipa bromoides* e *Carex hallerana*
-  Prateria alberate a *Stipa bromoides* e *Carex hallerana* in mosaico con lande ad *Urginea maritima* ed *Asphodelus microcarpus*
-  Lande ad *Urginea maritima* ed *Asphodelus microcarpus*
-  Praterie post-colturali
-  Cespuglieti, arbustieti e vegetazione arboreo-arbustiva in evoluzione
-  Boschi di Roverella
-  Boschi di Fragno
-  Boschi di Quercia della Palestina
-  Rimboschimenti di conifere





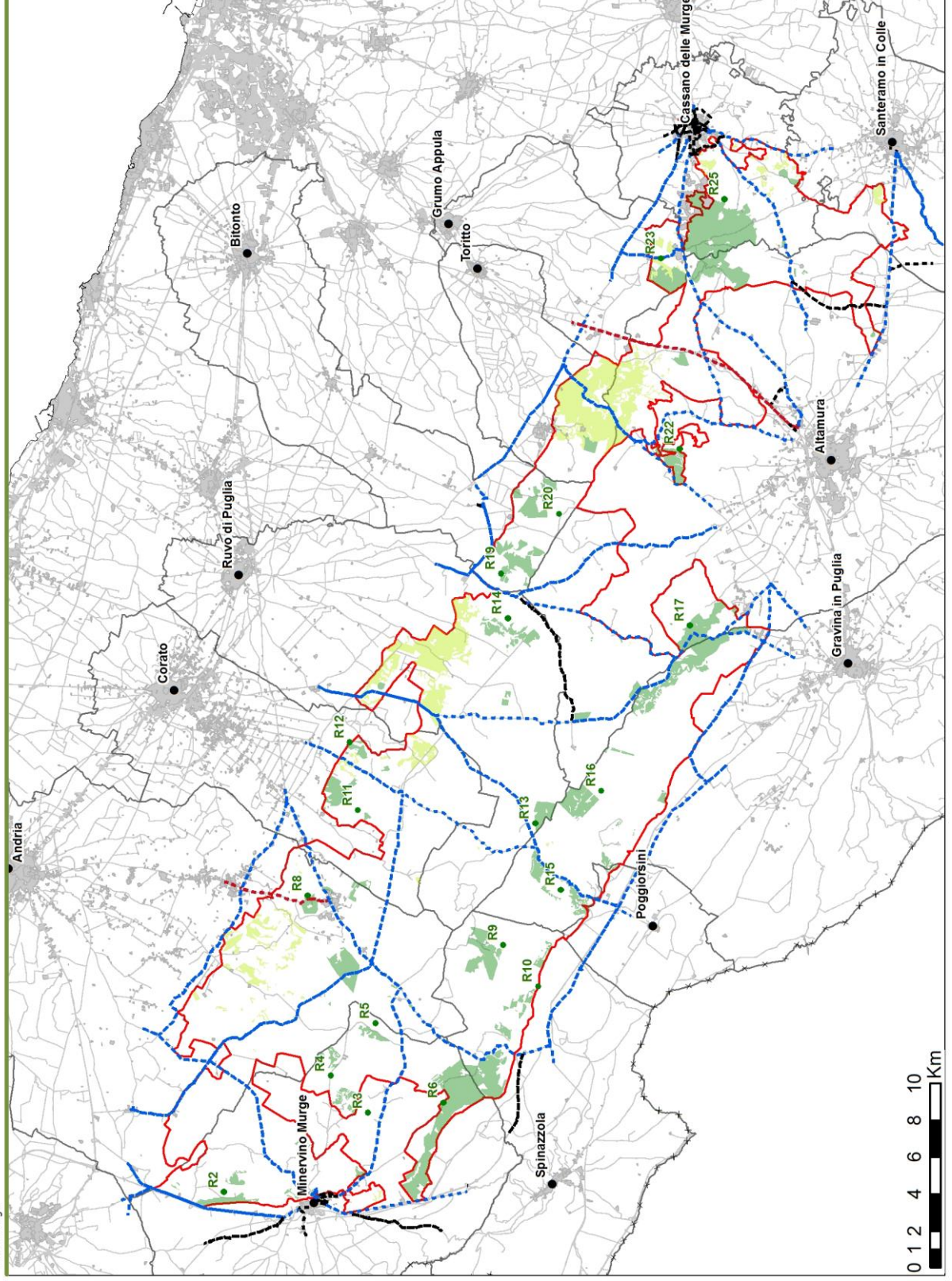
Legenda

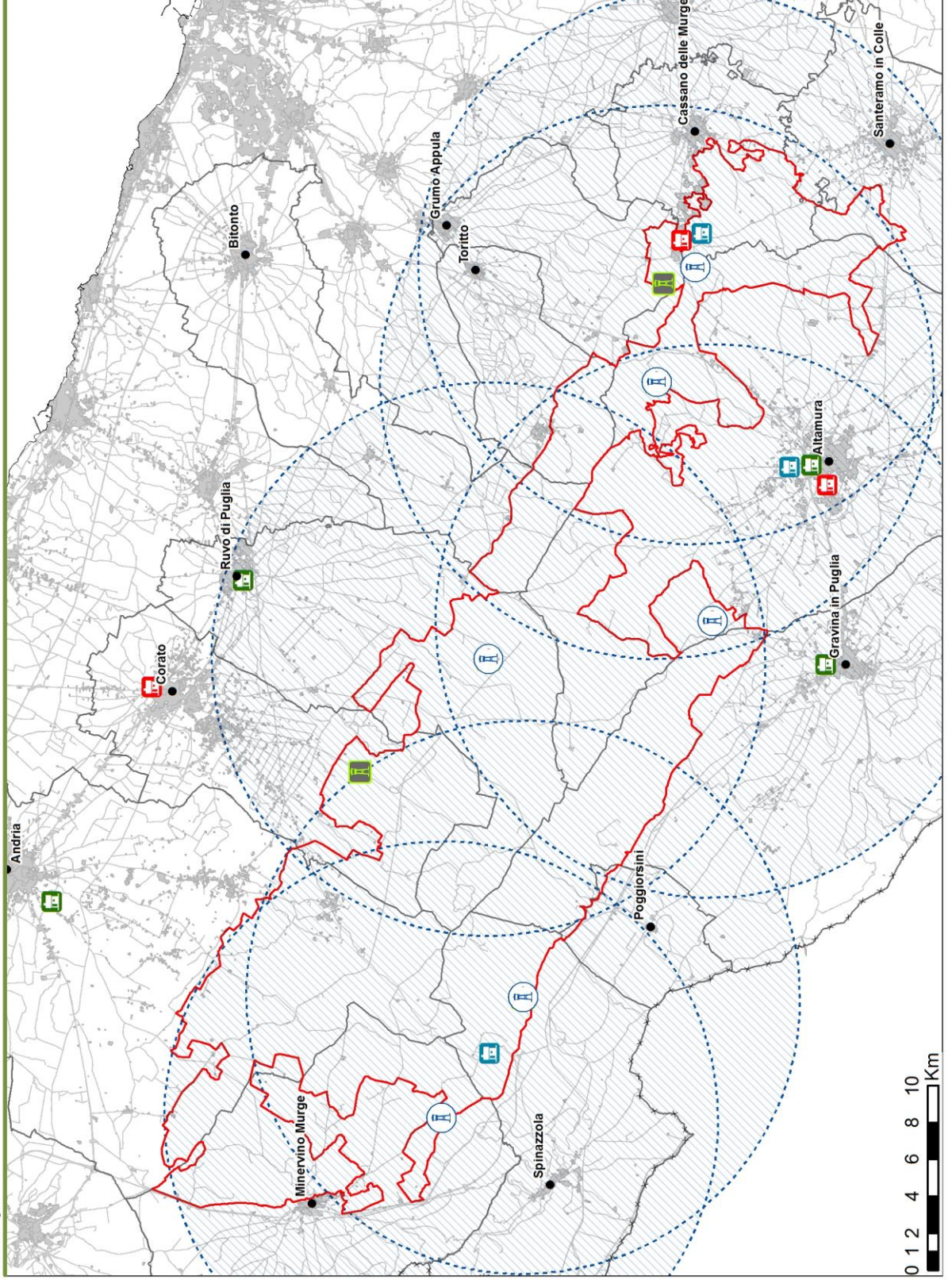
- Confine del Parco Nazionale dell'Alta Murgia
-  Mesomediterraneo termomediterraneo secco-subumido
-  Mesotemperato mesomediterraneo umido-subumido



Legenda

- Confine del Parco Nazionale dell'Alta Murgia
- Rimboschimenti di conifere
- Boschi di latifoglie
- - - Strada statale
- - - Strada provinciale
- - - Strada comunale





Legenda

— Confine del Parco Nazionale dell'Alta Murgia



Torrette di avvistamento



Torrette di avvistamento con sistemi di videosorveglianza



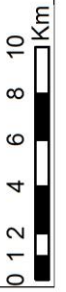
Stazioni Carabinieri Parco

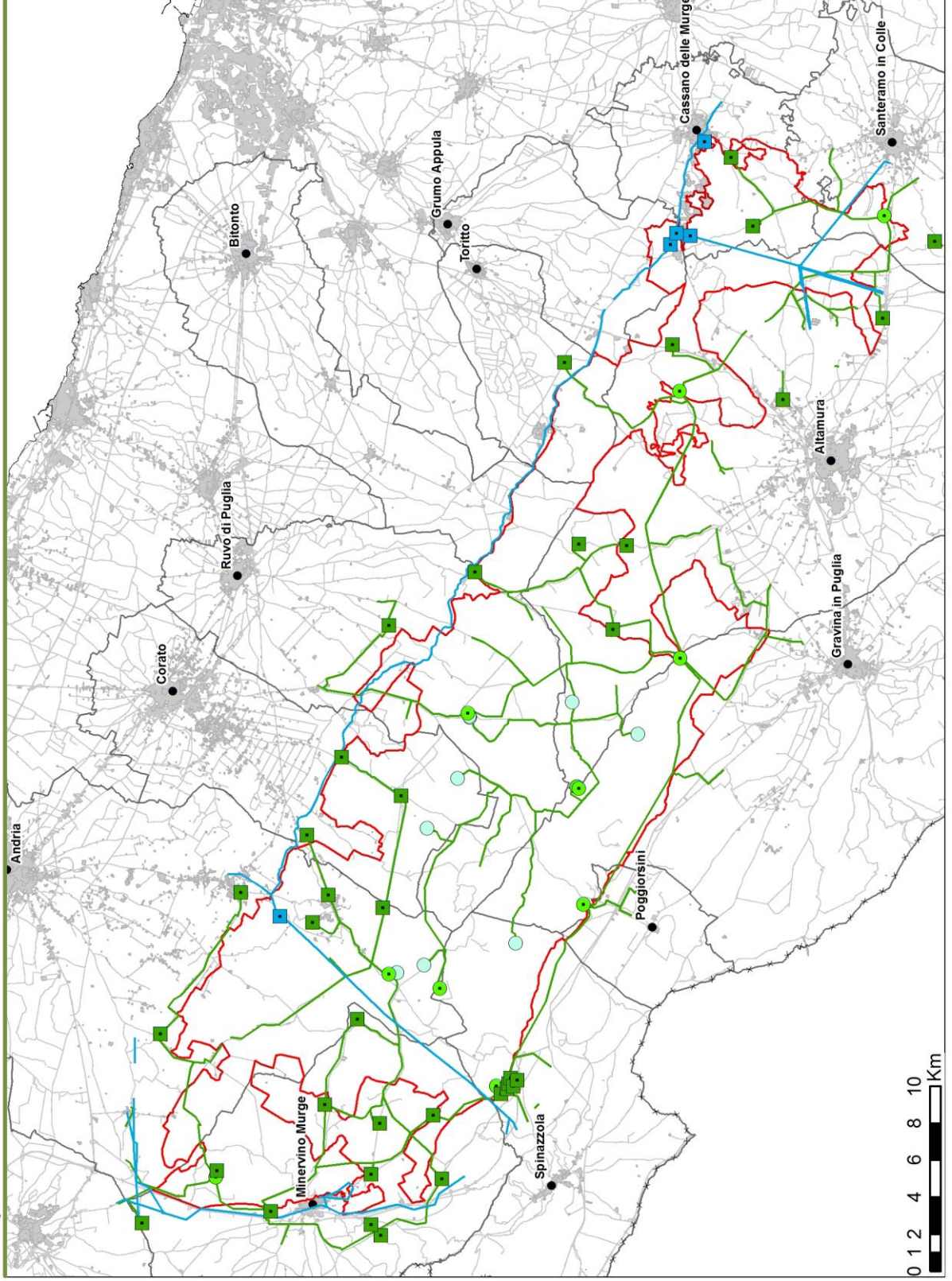


Distaccamenti Vigili del Fuoco



Presidi territoriali A.R.I.F.





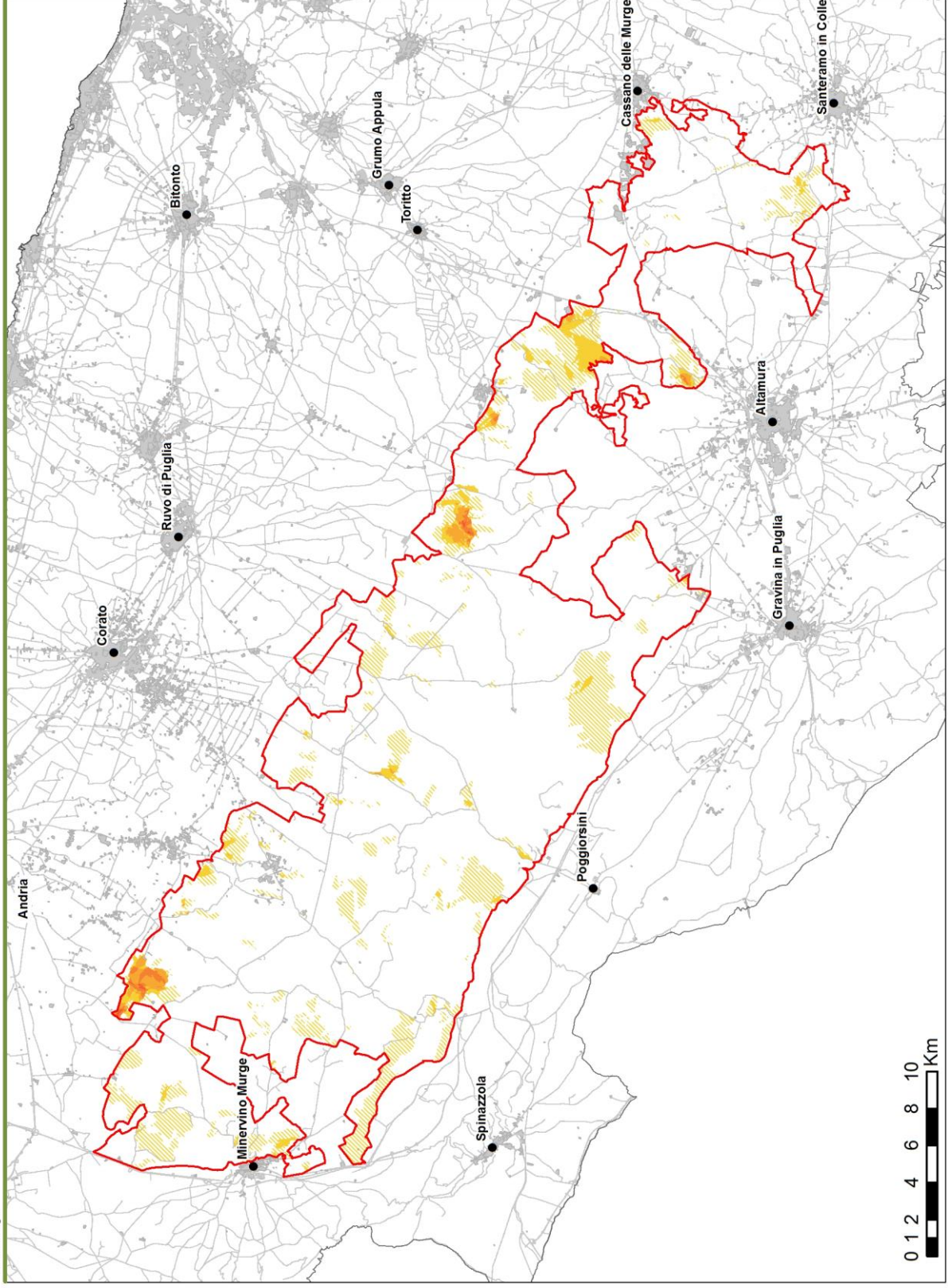
Legenda

-  Confine del Parco Nazionale dell'Alta Murgia
-  Serbatoi acquedotto pugliese
-  Serbatoi acquedotto rurale
-  Impianti di sollevamento rurale
-  Pozzi acquedotto rurale
-  Rete acquedotto pugliese
-  Rete acquedotto rurale



Legenda

-  Confine del Parco Nazionale dell'Alta Murgia
-  Fonte di approvvigionamento idonea per velivoli
-  Elisuperficie idonea ad attività della Protezione Civile
-  Aviosuperficie idonea ad attività della Protezione Civile
-  Laghi e bacini artificiali



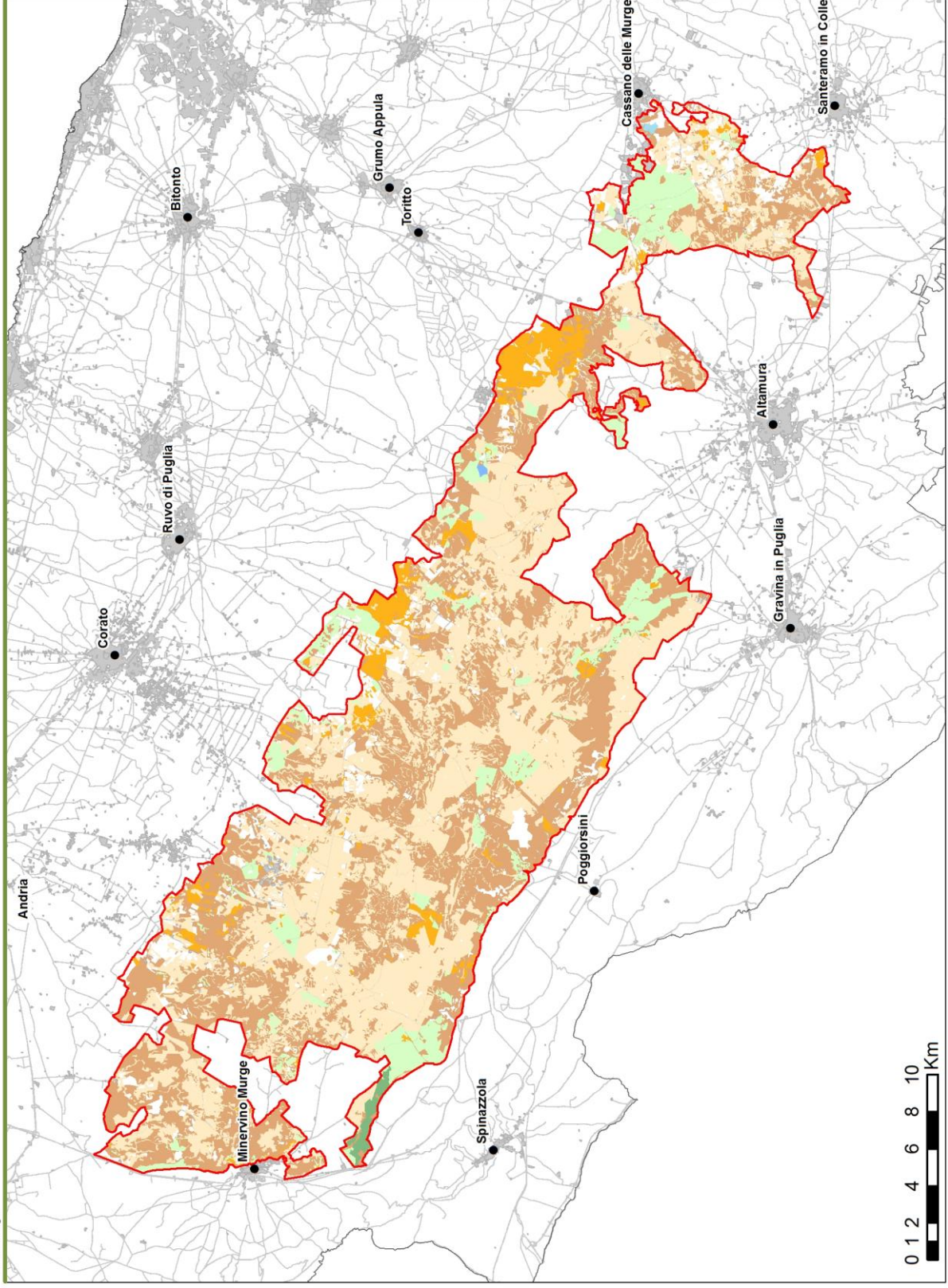
Legenda

— Confine del Parco Nazionale dell'Alta Murgia

Superfici percorse dal fuoco nel decennio 2008-2017

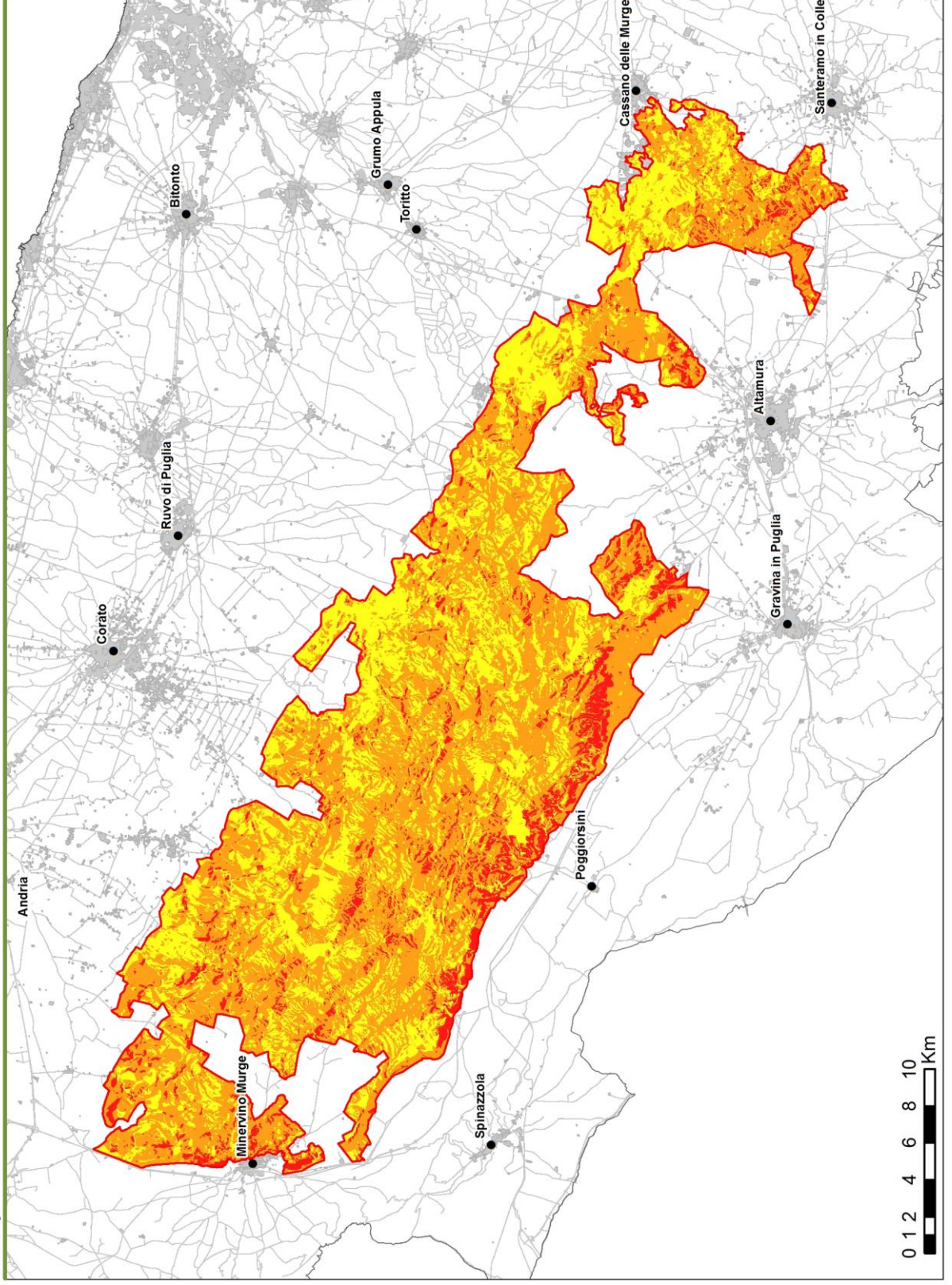
- Una volta
- Due volte
- Tre volte
- Quattro volte
- Cinque volte
- Sei volte





Legenda

- Confine del Parco Nazionale dell'Alta Murgia
- Modello 1
- Modello 2
- Modello 3
- Modello 4
- Modello 6
- Modello 9
- Modello 10



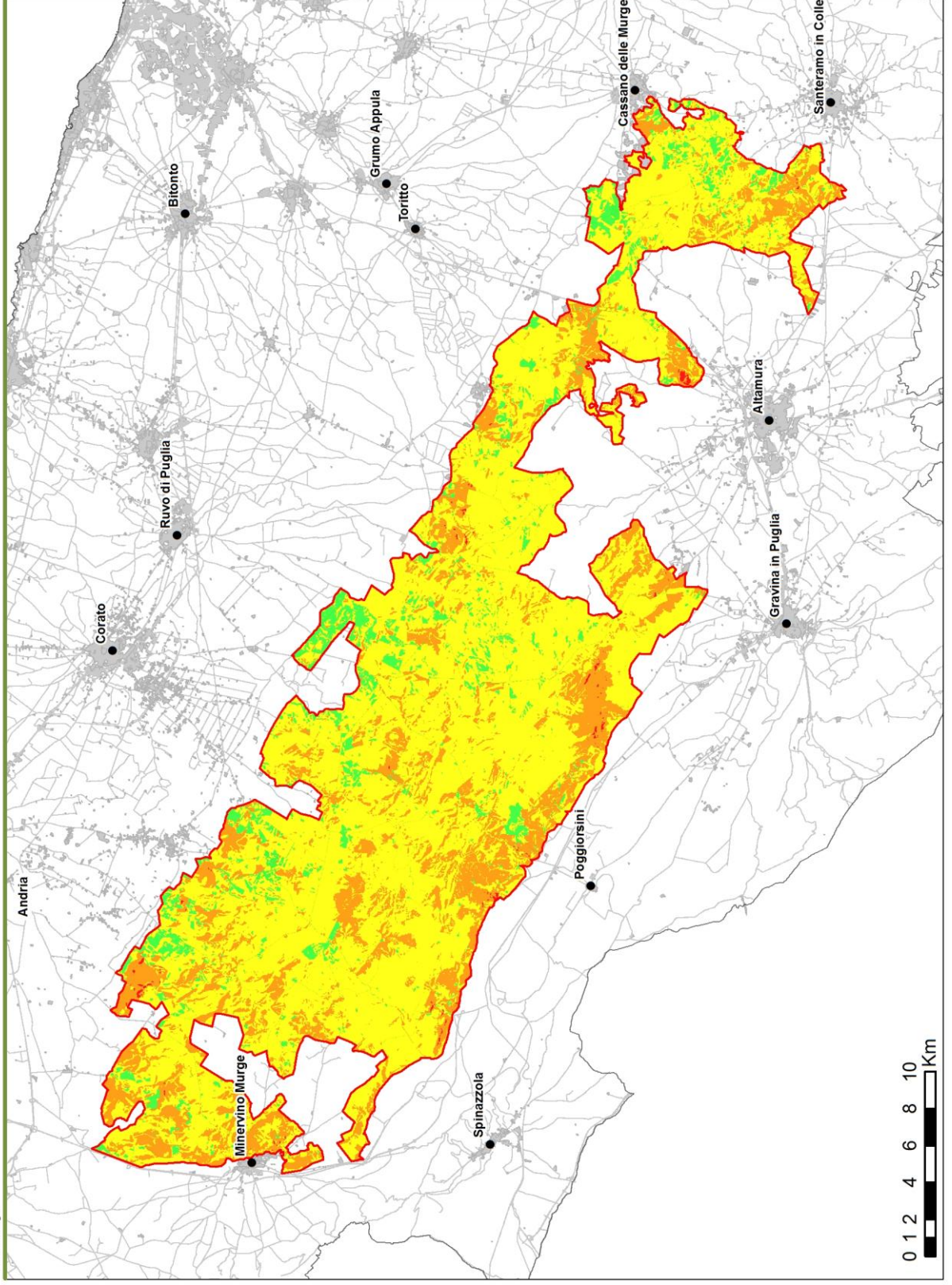
Legenda

— Confine del Parco Nazionale dell'Alta Murgia

Media

Medio - Alta

Alta



Legenda

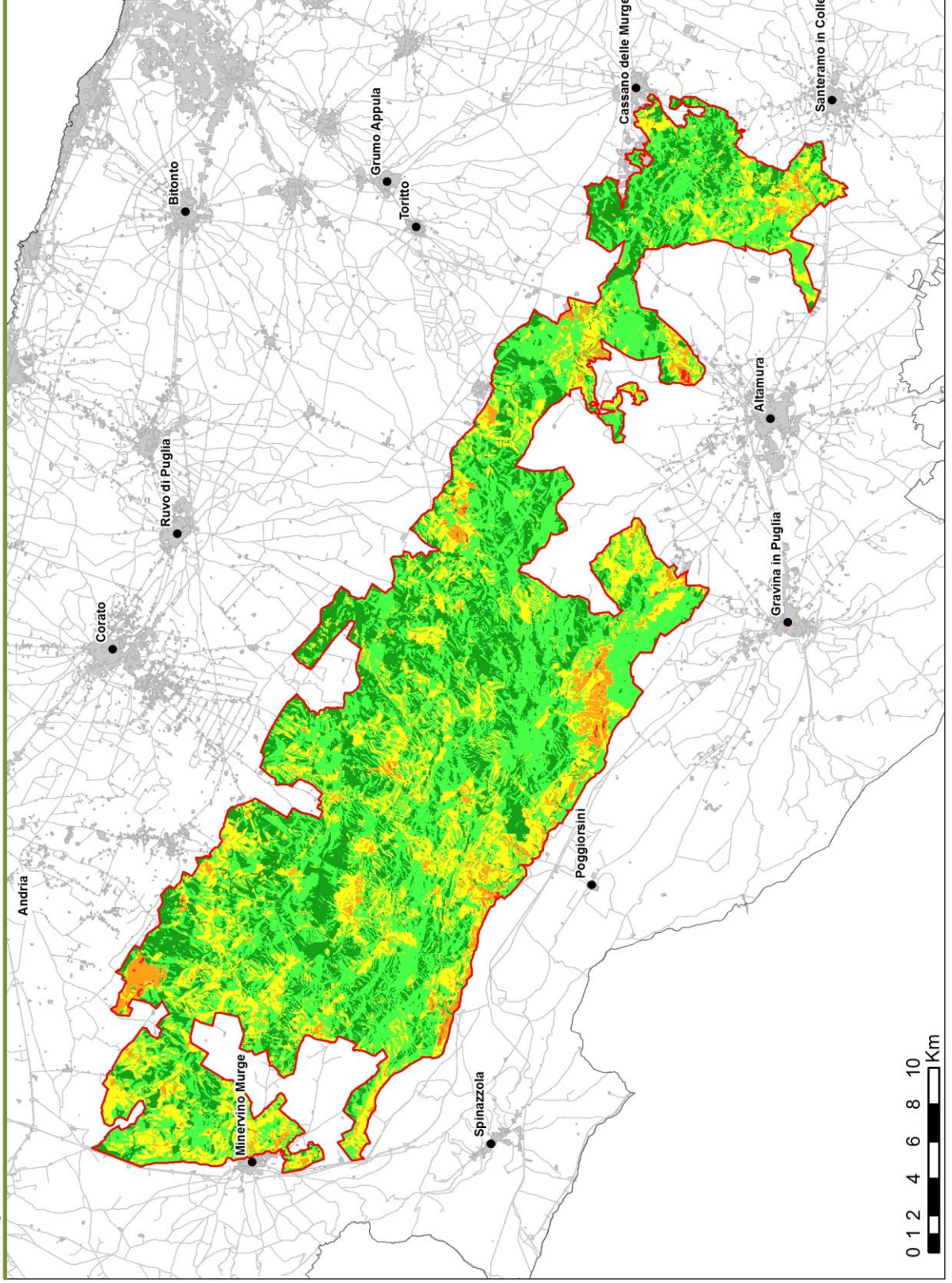
— Confine del Parco Nazionale dell'Alta Murgia

Medio - Bassa

Media

Medio - Alta

Alta



Legenda

— Confine del Parco Nazionale dell'Alta Murgia

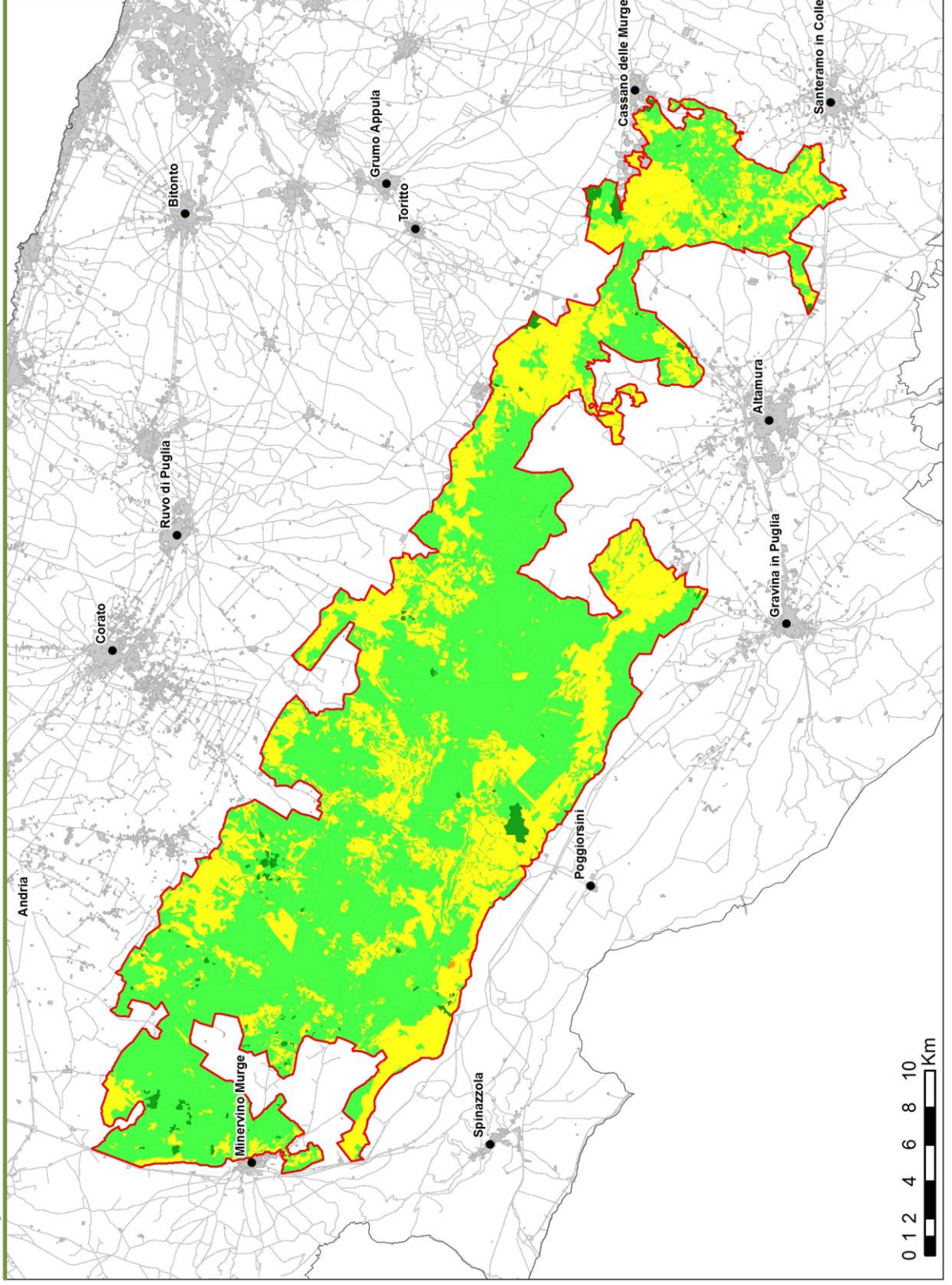
Bassa

Medio - Bassa

Media





Medio - Alta

Alta

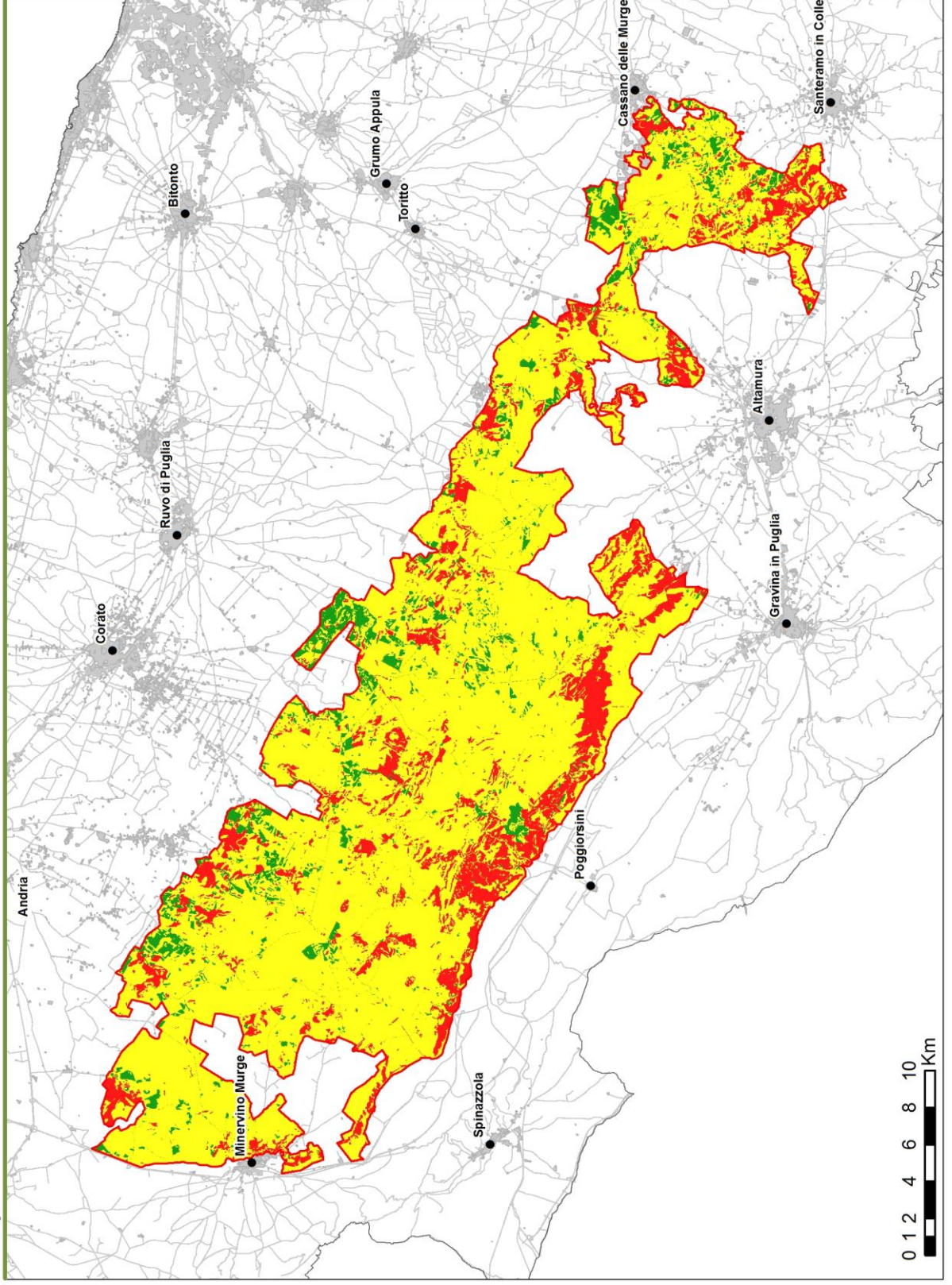


Legenda

— Confine del Parco Nazionale dell'Alta Murgia


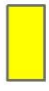

-  Bassa
-  Medio - Bassa
-  Media
-  Medio - Alta

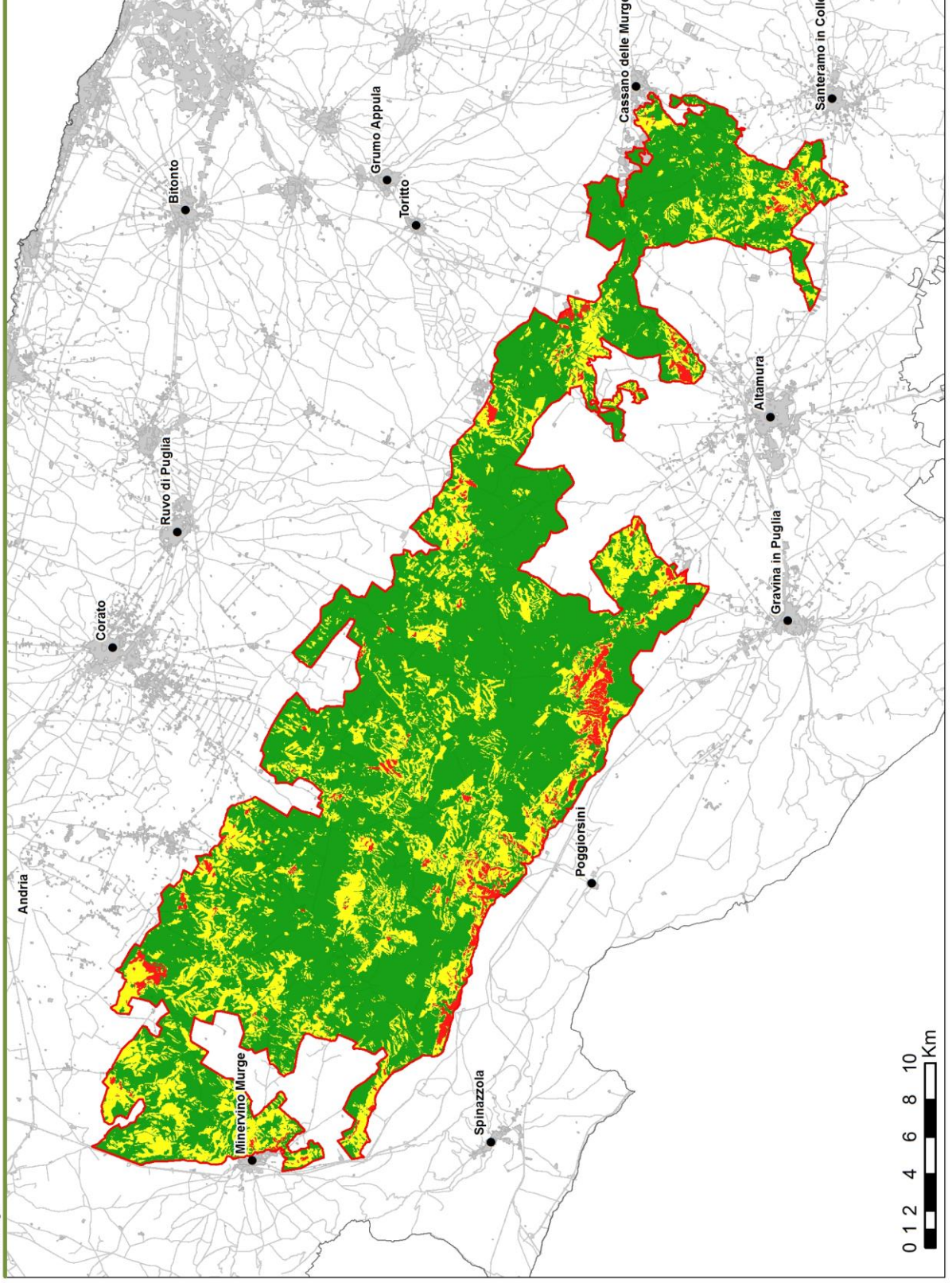


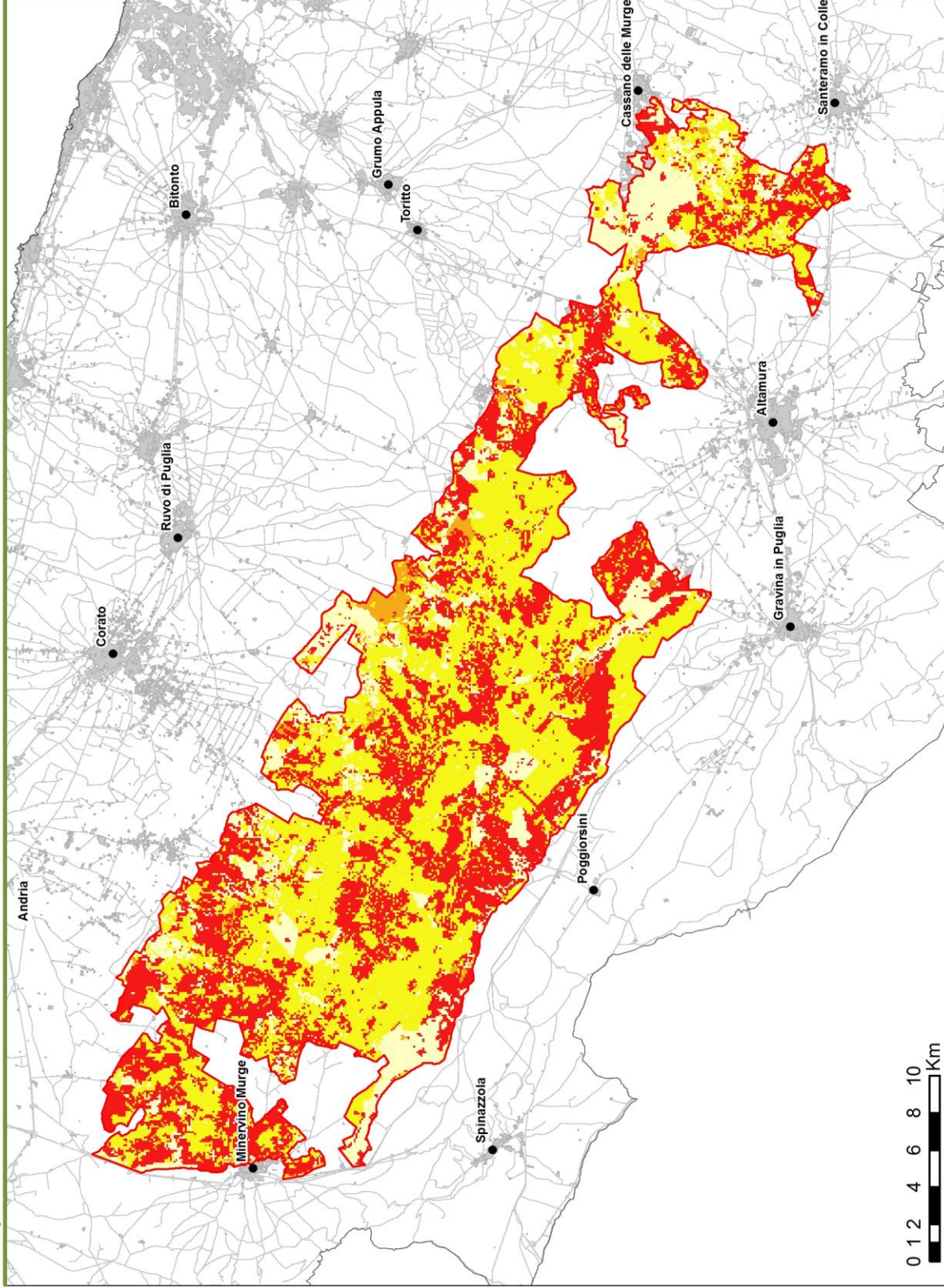


Legenda

— Confine del Parco Nazionale dell'Alta Murgia

-  Basso
-  Medio
-  Alto





Legenda

— Confine del Parco Nazionale dell'Alta Murgia

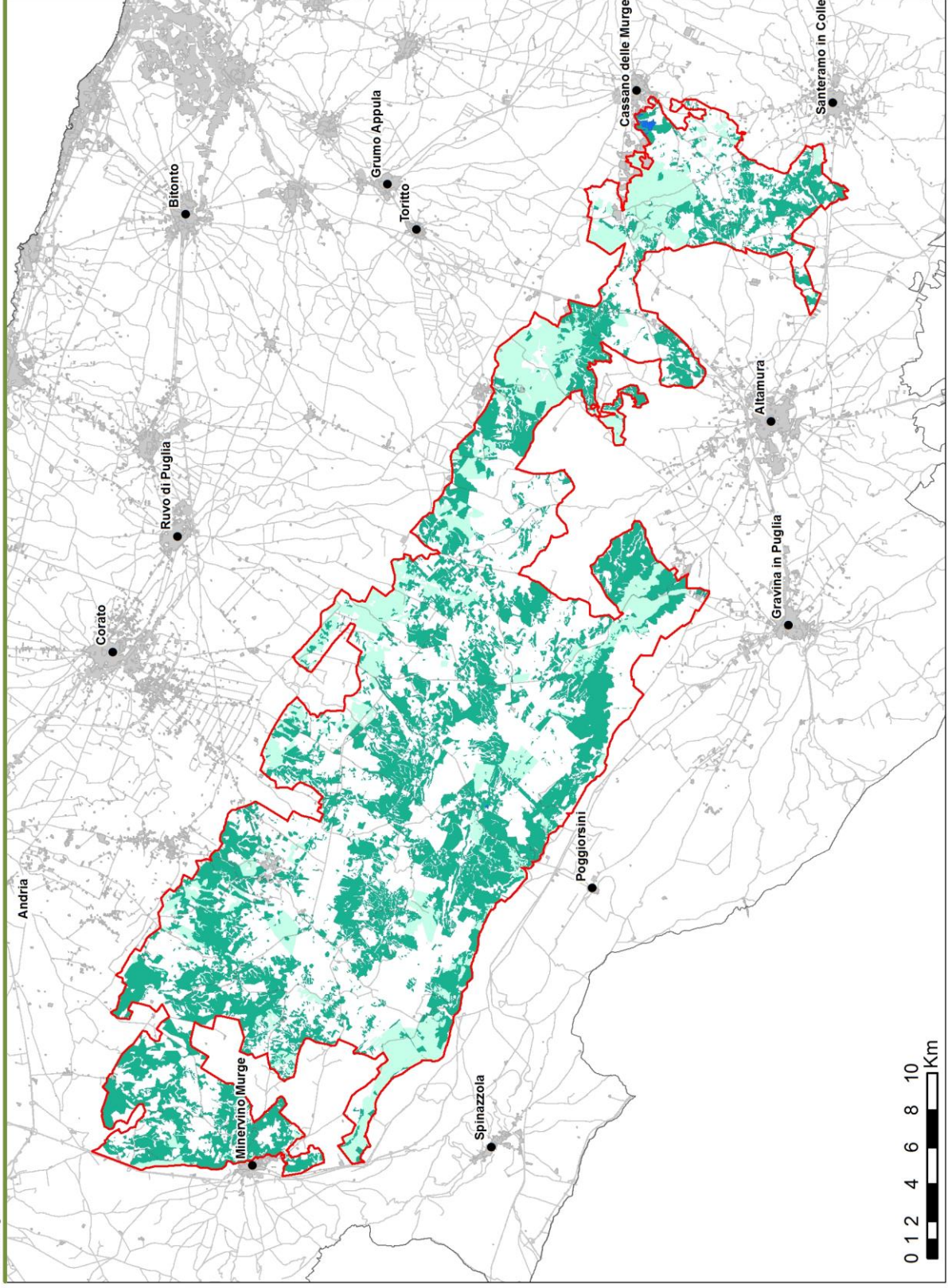
< 400 KW/m

400 - 800 KW/m

800 - 1600 KW/m

1600 - 3200 KW/m

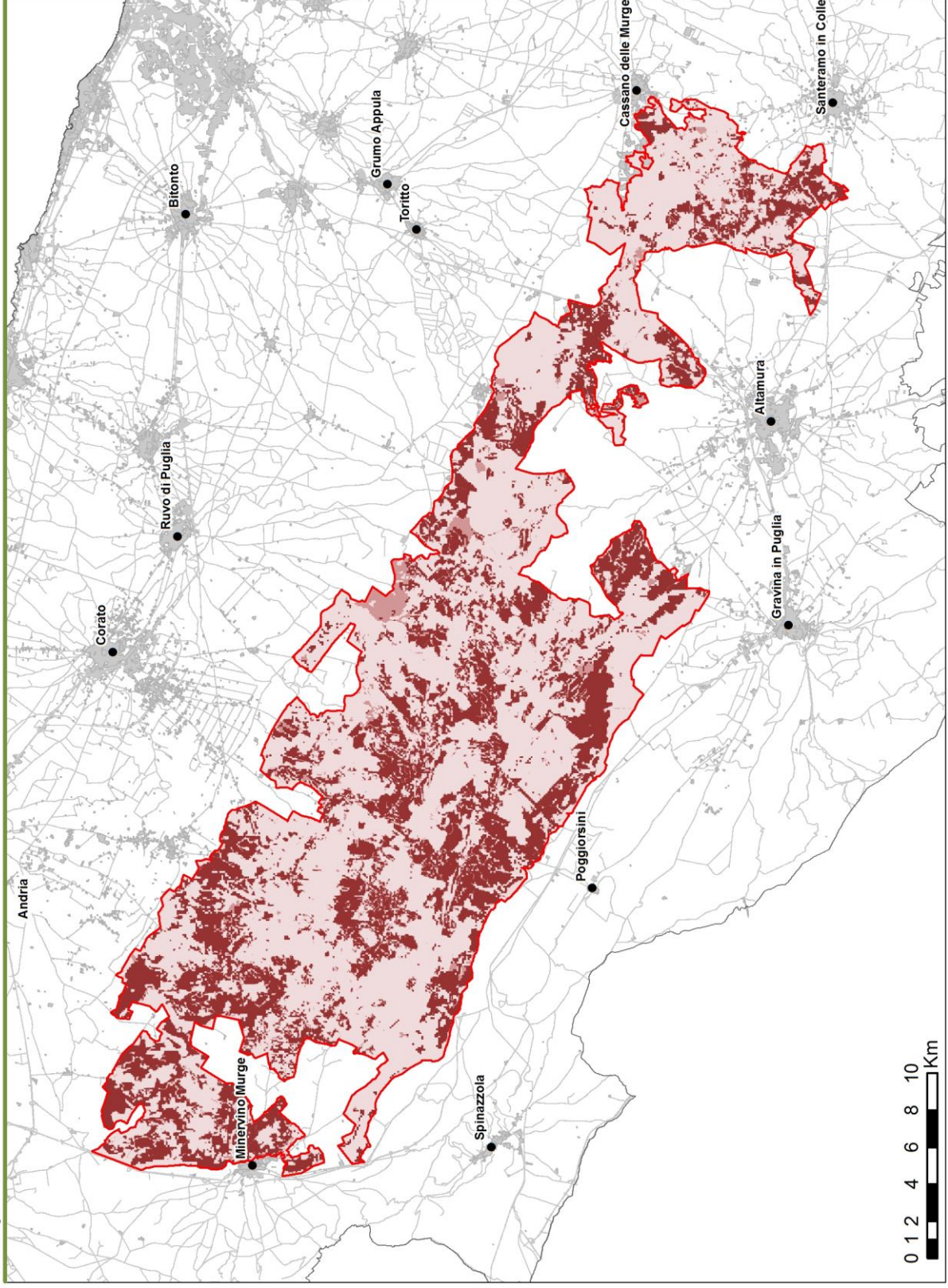
> 3200 KW/m



Legenda




— Confine del Parco Nazionale dell'Alta Murgia

- 1
- 2
- 3






Legenda

— Confine del Parco Nazionale dell'Alta Murgia

-  Basso
-  Medio
-  Alto

Legenda

-  Viabilità asfaltata
-  Viabilità non asfaltata
-  Fascia di 200 m
(Boschi compresi nel PN)

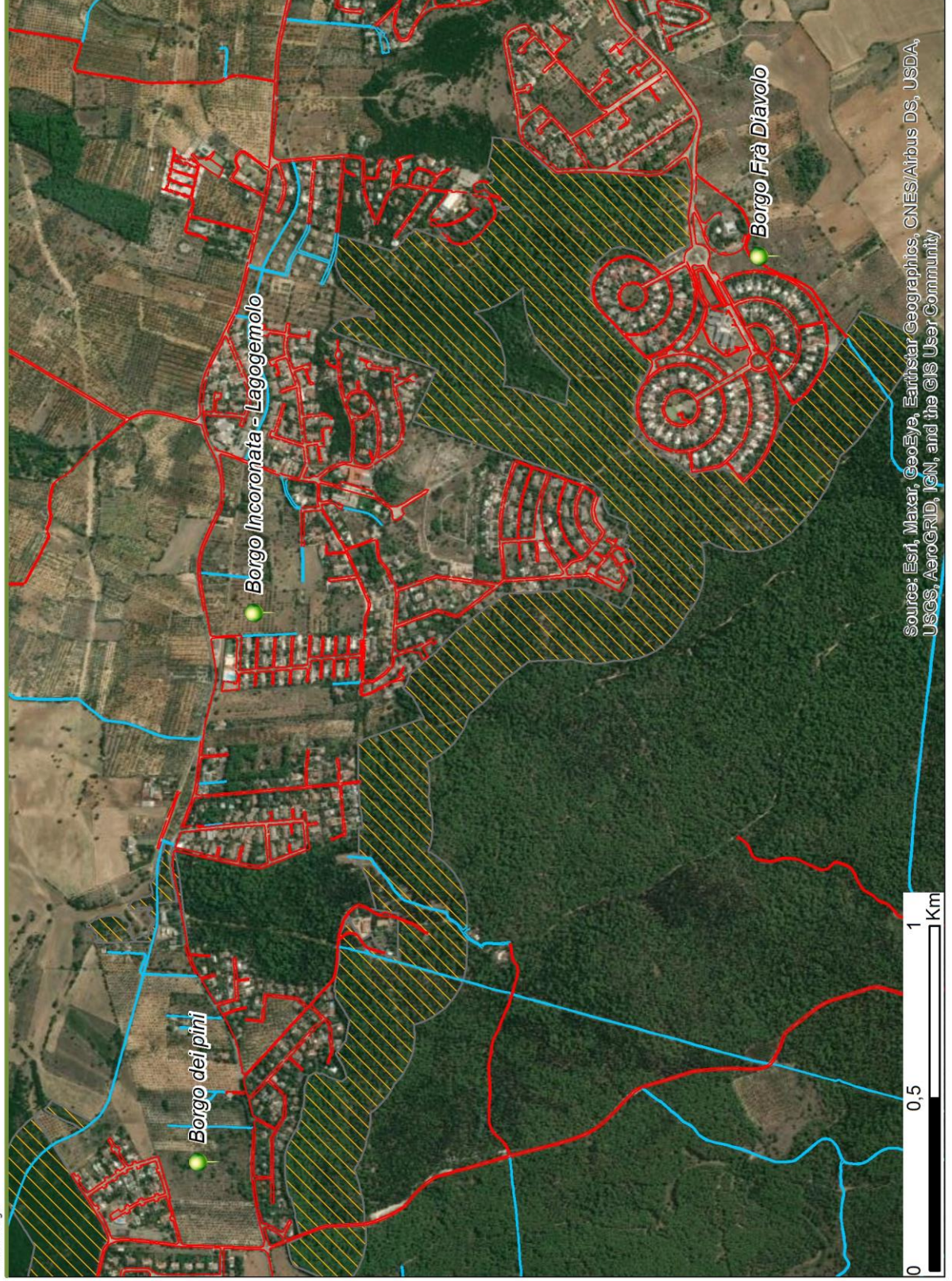



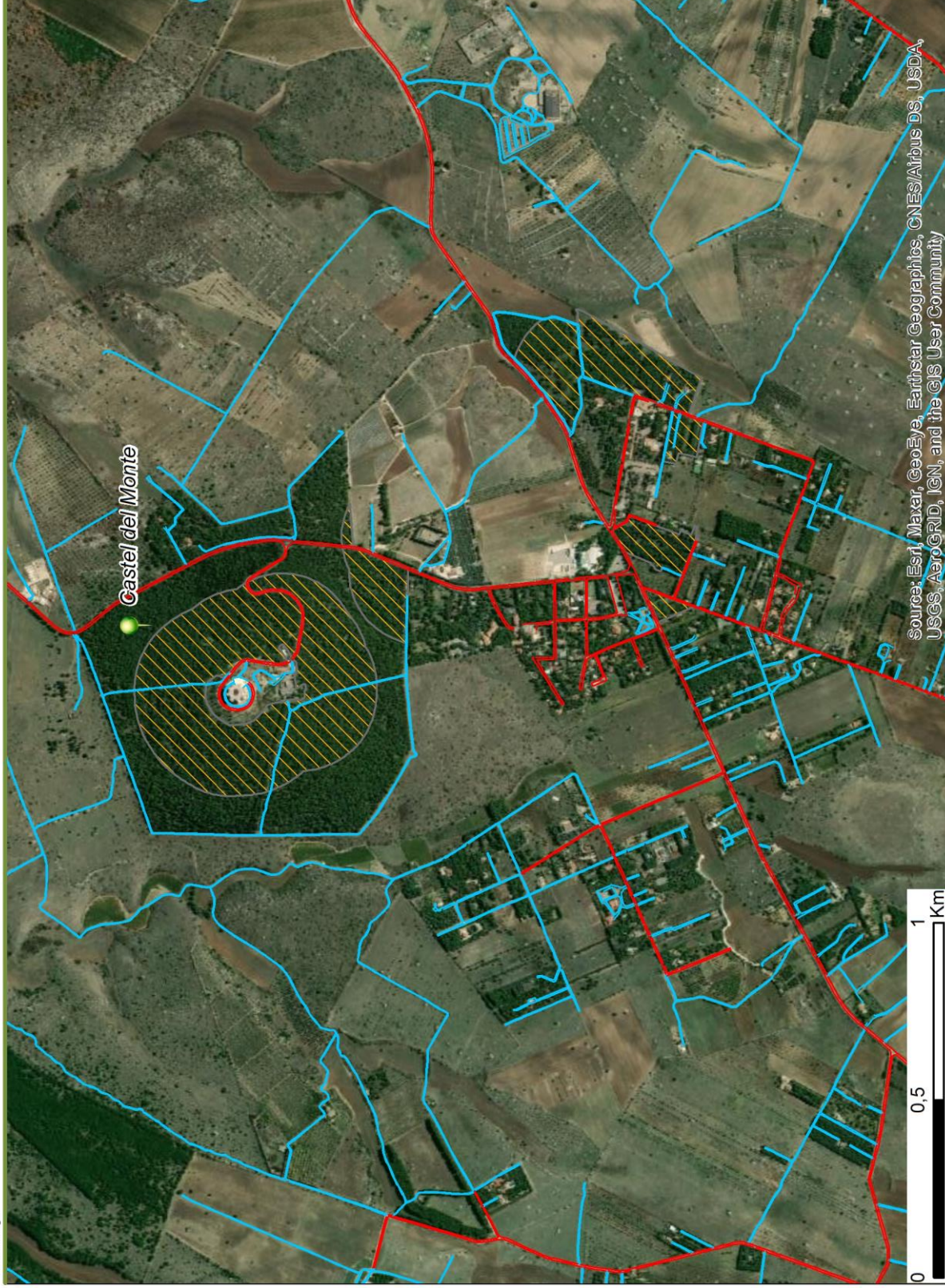


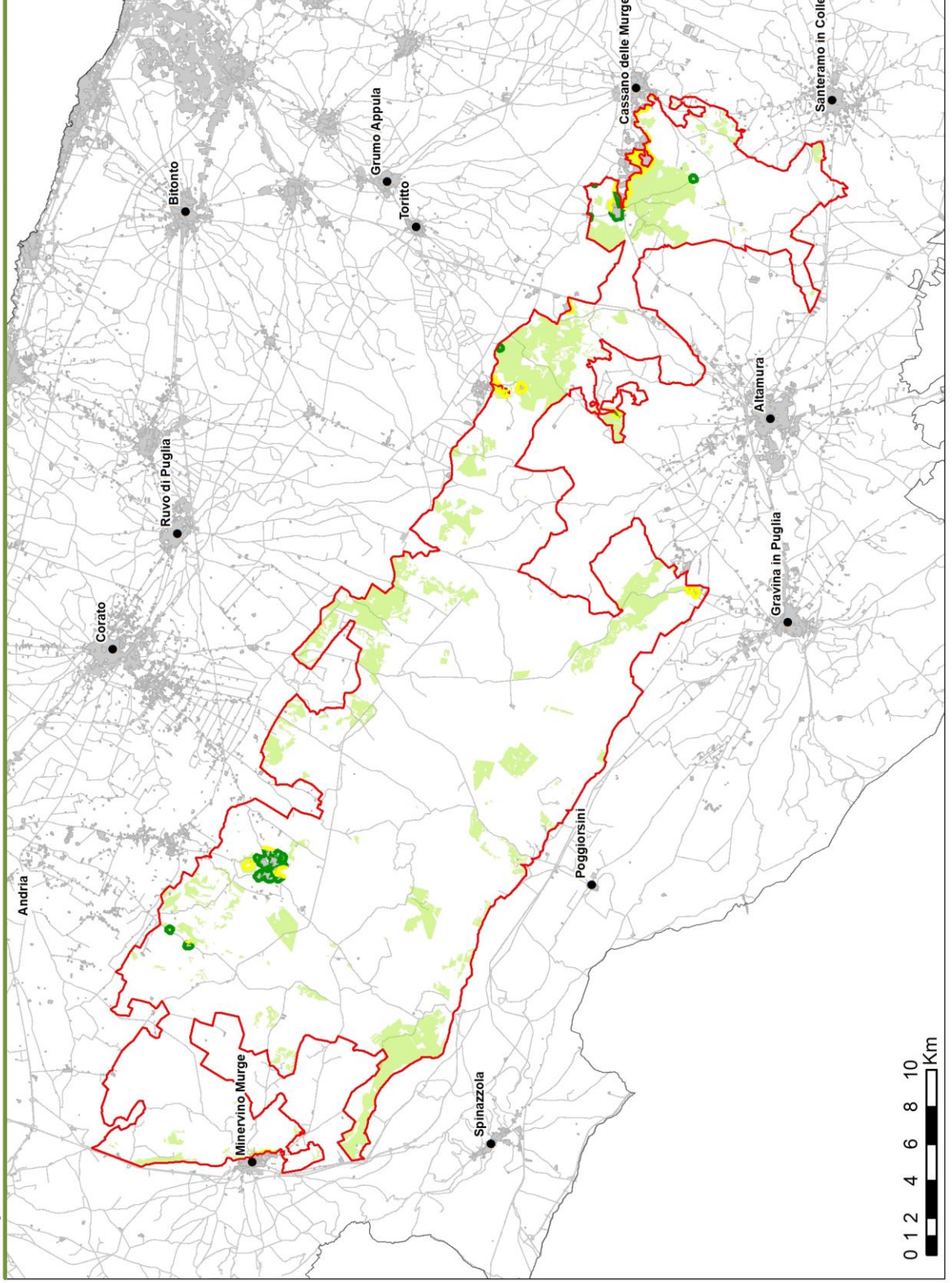
TAVOLA N. 25 B

Carta delle zone di interfaccia urbano-foresta (Castel del Monte)

Legenda

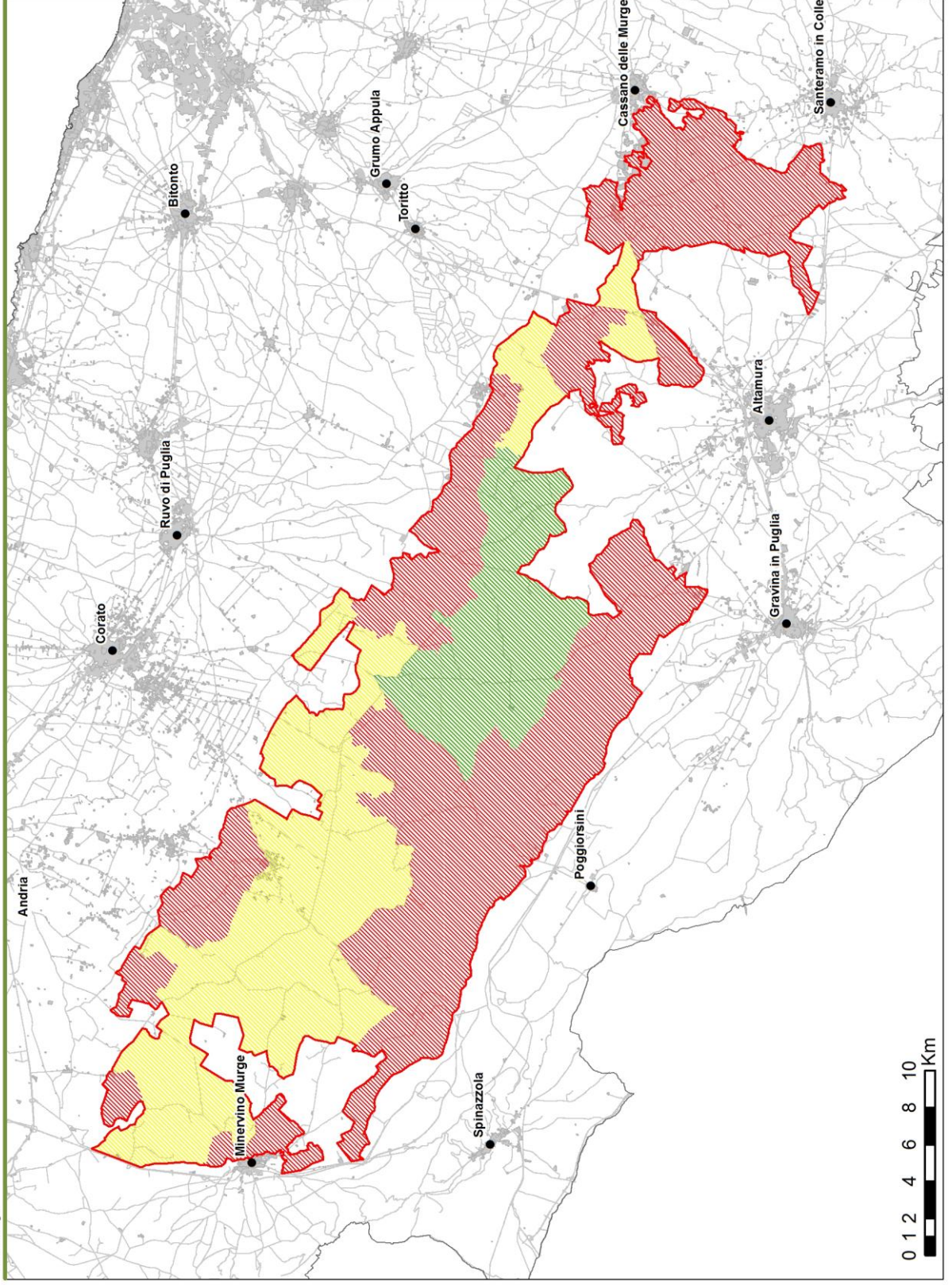
-  Viabilità asfaltata
-  Viabilità non asfaltata
-  Fascia di 200 m
(Boschi compresi nel PN)





Legenda

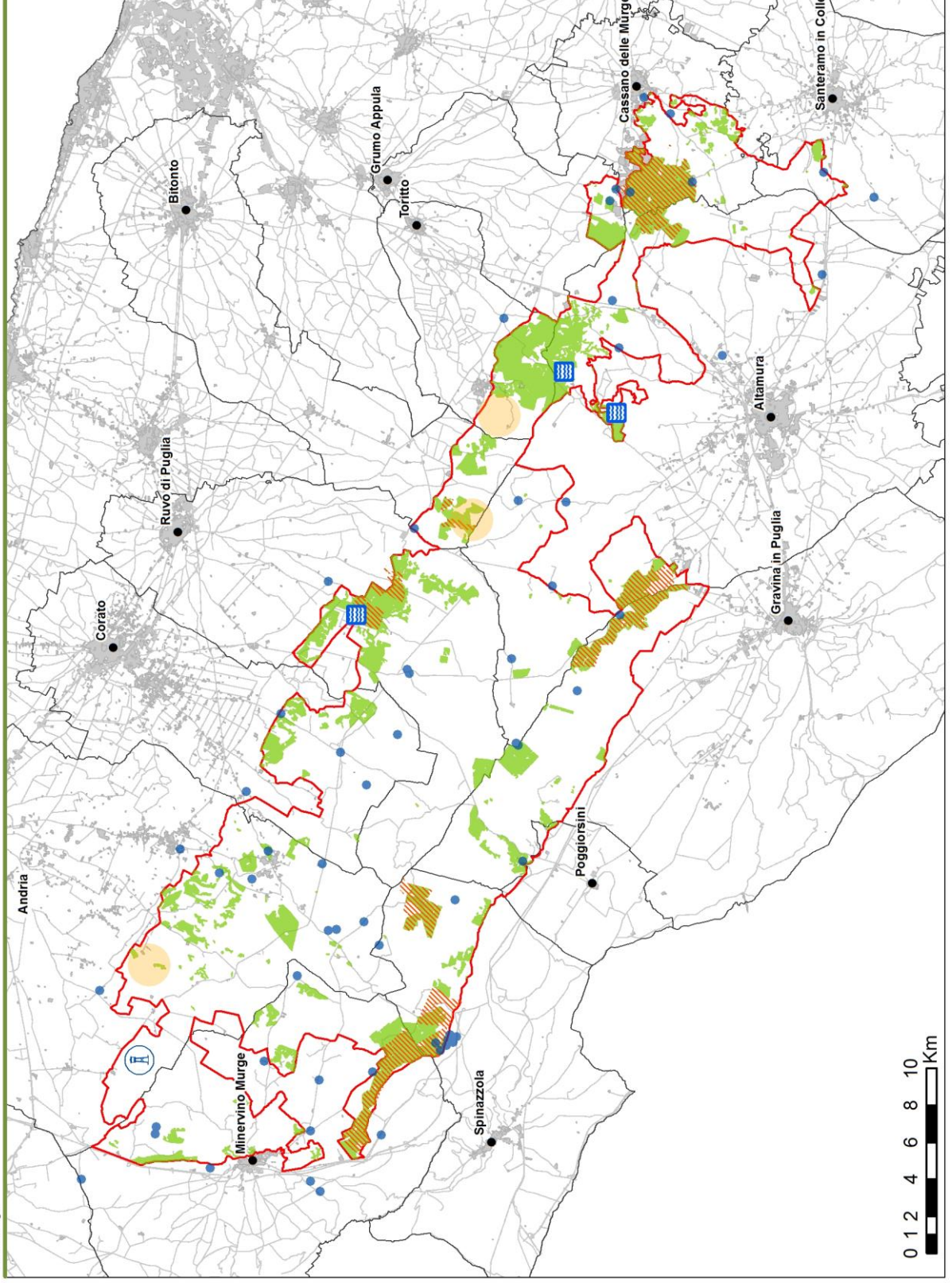
- Confine del Parco Nazionale dell'Alta Murgia
- Aree boscate
- Bassa
- Media
- Alta



Legenda

— Confine del Parco Nazionale dell'Alta Murgia

-  Alta
-  Media
-  Bassa



Legenda

- Confine del Parco Nazionale dell'Alta Murgia
- Proprietà regionale
- Nuclei o complessi boscati Interventi di Selvicoltura preventiva
- Incremento dei punti di avvistamento
- Vasche mobili
- T Torretta con sistema di videosorveglianza
- Ricognizione e/o ripristino dei punti di approvvigionamento idrico per i mezzi terrestri

