



LIFE III NATURE IN SLOVENIJA

**Ministry of Environment and Spatial Planning
Republic Slovenija
Directorate for Environment**

Vesna Kolar Planinšič, Msc.

Rome, 4.7.2006

1



**1. Contribution of Life projects for the
implementation of Habitate Directive**

**2. Preparation of the management
plans and implementation measures**

**3. Guidelines for Natura 2000
management plans**

2



(EC) n° 1655/2000, 17. july, 2000

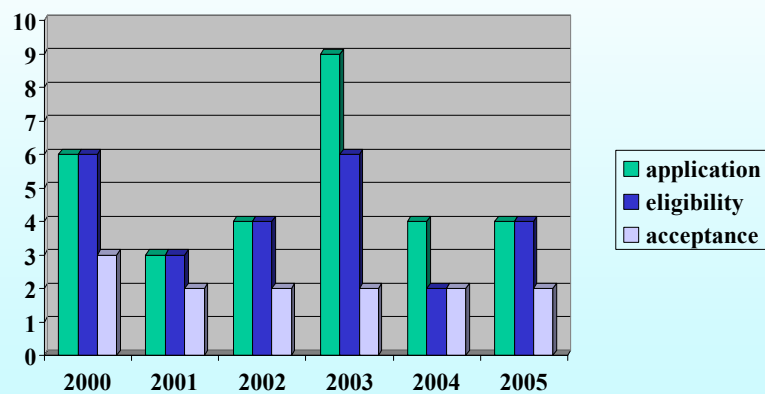
Slovenia starts with Life programme in 2000

1. capacity development
2. education and information
3. financing, public tender
4. implementation

3

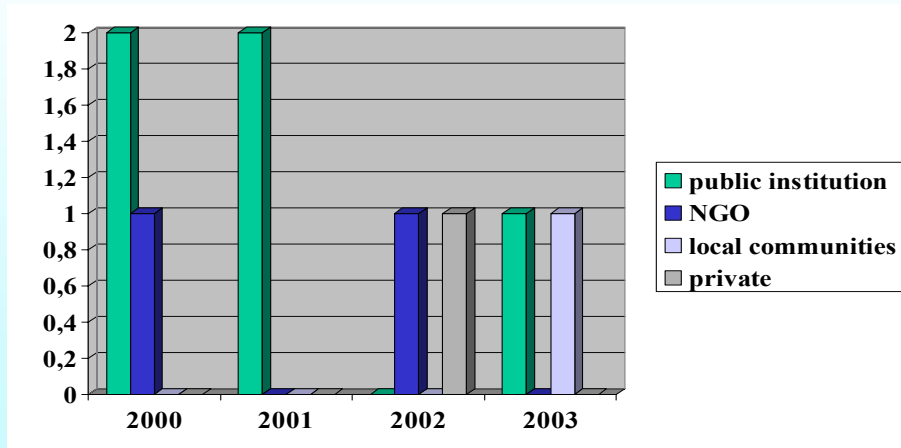


SI projects application/acceptance



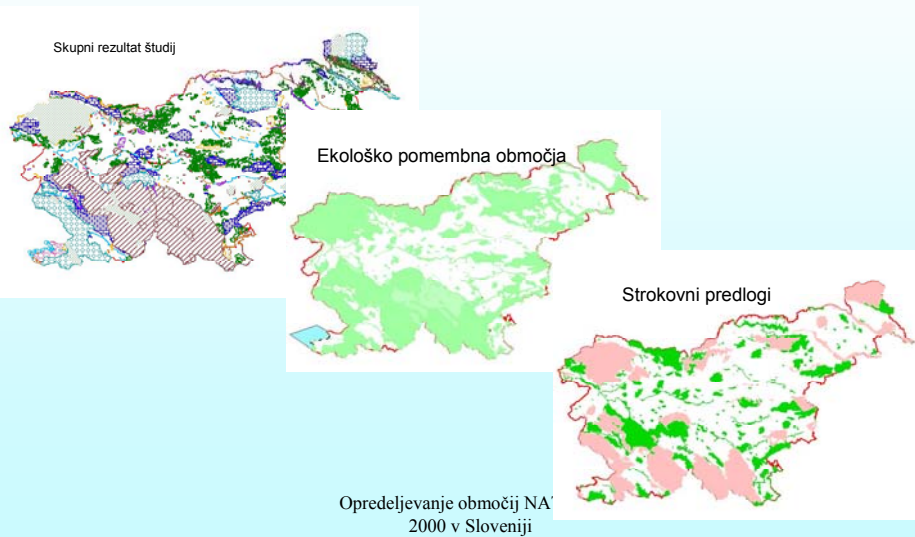
4

Structure



5

LIFE project in parallel with development of Natura 2000 SI network



EU species/habitat types Slovenija



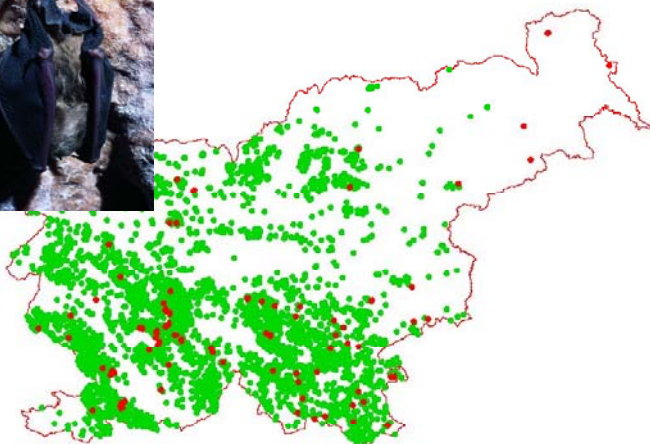
skupina	EU 25 v SI	pSCI pSPA
habitat types	61	56
birds	109	57
mammalia	18	16
reptiles and amphibians	12	8
fish	34	27
invertebrates	42	33
botanic species	34	27

56

111

7

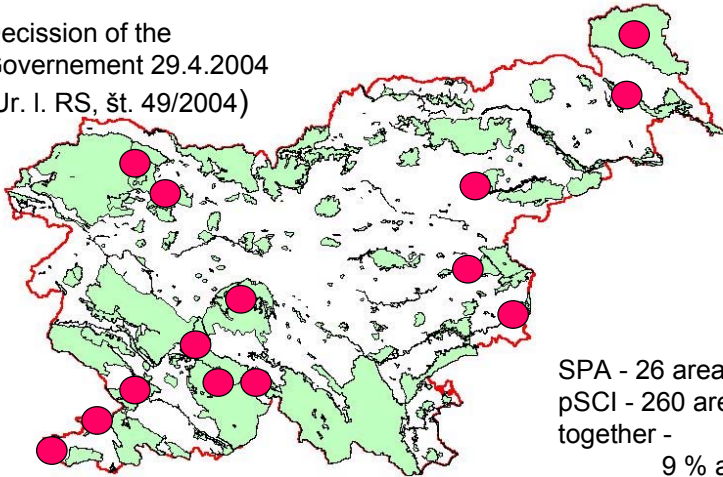
Caves not open to the public >8000



Decree on areas of community interest Natura 2000



Decision of the
Government 29.4.2004
(Ur. l. RS, št. 49/2004)



SPA - 26 areas	22,8 %
pSCI - 260 areas	31,6 %
together -	35,5 %
	9 % above 900 m



Implementing article 6 H.D. LIFE projects in Slovenija



1. Conservation of peat bogs in Triglav national park
2. Renaturation project of nature reserve Škocjanski zatok
3. Management plan for dry meadows on Oslica and Vetrnik
4. Large carnivores conservation, 1.phase
5. Preservation of endangered habitats and species in the future Karst park
6. Establishing of lonf-term conservation of crex-crex in Slovenia
7. Conservation species and habitats in Sečoveljske soline
8. Management models and information system
9. Improvement of habitats for lutra-lutra in Goričko
10. Conservation measures on Mura river
11. Natura 2000 implementation actions on Cerknjško lake

11

Management plans/measures

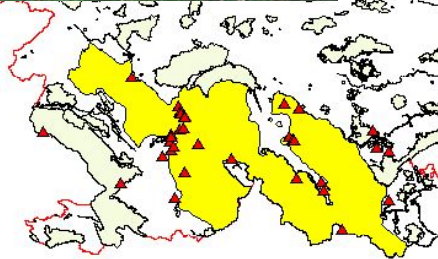


Foto: Pojbič

Opredelejevanje območij NATURA
2000 v Sloveniji

12

Species action plan

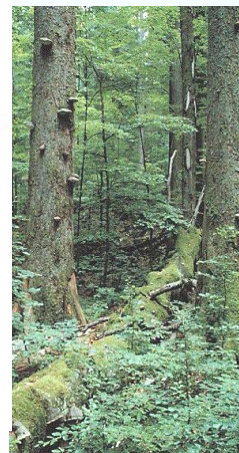
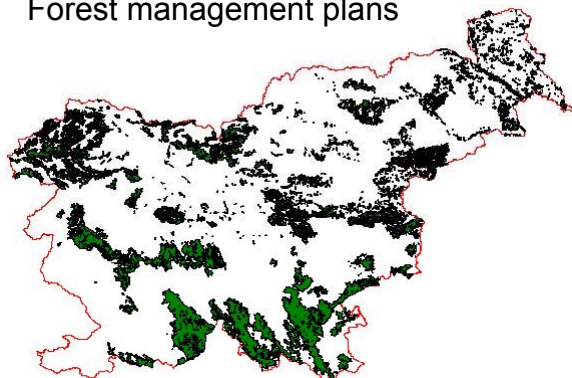


13

Habitat management plans



Forest management plans



Opredelevanje območij NATURA
2000 v Sloveniji

14

Some LIFE projects results



- Development of new working methods
- Better cooperation between partners and stakeholders – the step forward for nature conservation (more time and sources)
- Development of good practice cases
- Improvement of Natura 2000 communication
- More budget for Natura 2000 and more action on the field / more positive attitude towards Natura 2000
- The implementation measures caused positive attitude of stakeholders
- Development of NGO's
- Development of other nature conservation /forestry institutions and their position in the system

15

Natura 2000 management plans guidelines



- management plan for nature reserve Škocjanski zatok
- management plan for dry meadow Oslica and Vetrnik
- management plan for Sečoveljske soline
- management plans for Snežnik, Boletina, Jovsi, Jelovica, Ličenca



“NATURA 2000 in Slovenia – management models and information system”



Financers

- EC (LIFE III)
- Ministry for the Environment and Spatial Planning RS

Project partners

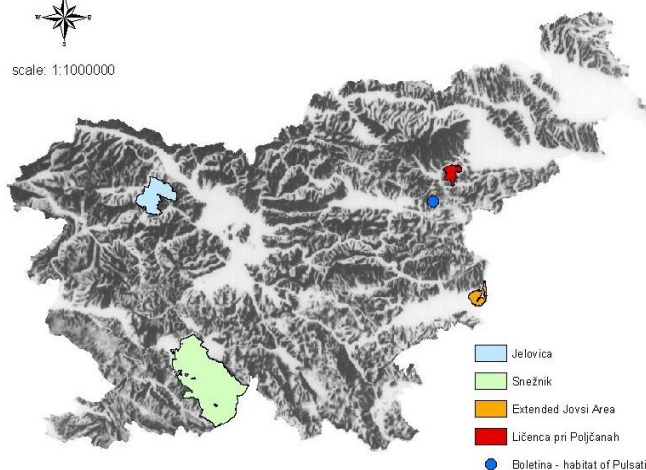
- **Ministero dell' Ambiente e Tutela del Teritori R Italia**
- Slovene Forest Service
- The Chamber of Agriculture and Forestry of Slovenia
- Institute for Waters of the Republic of Slovenia
- Fisheries Research Institute of Slovenia
- Notranjska Museum Postojna
- Municipality of Šentjur
- The Local Community of Kaple

17

Pilot project NATURA 2000 sites



scale: 1:1000000



- Jelovica
- Snežnik
- Extended Jovsi Area
- Ličenca pri Poljčanah
- Boletina - habitat of *Pulsatilla grandis*



Areas: 65.981 ha

Cases:

- Snežnik
- Jelovica
- Jovsi
- Ličenca
- Boletina

- 3 pSPA
- 8 pSCI

18



The guidelines for preparation of Natura 2000 management plans

- Studies of the EU examples
- Workshops (6)
- The draft of the guidelines prepared
- The draft of the guidelines tested
- Changes in the guidelines after five pilot management cases
- Final draft in 2007



M1: 04/2006 ✓

M2: 12/2007 ✗

19



The integration of the Natura 2000 management in the existing sector programmes and plans

- Workshops
- Integrated management discussions : fisheries, water management, forestry, agriculture, spatial planning
- Proposal for the Natura 2000 management integration



M1: 04/2006 ✓

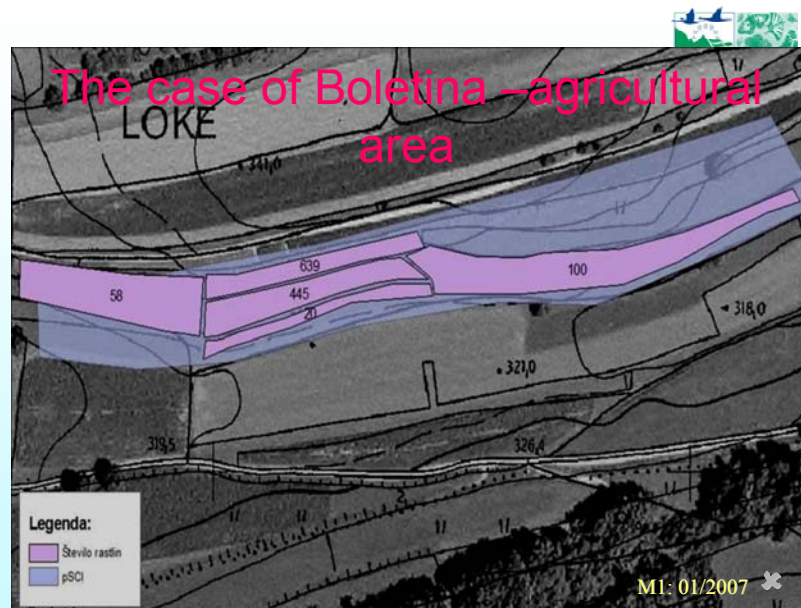
20

The contents of guidelines small areas/comprehensive areas



- Regional assessment
- Nature conservation state
- Nature conservation assessment and aims/specified main aims
(Strategy of Biodiversity and Landscape, Action plans for species, National Environmental program)
- Other land use aims
- The possibilities for integration of action into sector politics
(Rural development plan, Regional development, etc.)
- Definition suitable land use in the future (forest/ agriculture) to become an integrated part of local community land-use plans
- Definition of other measures
- Strategy for the land acquisition
- Communication of stakeholders
- Land-owners negotiations

21



22

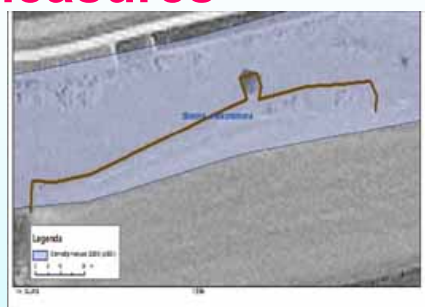
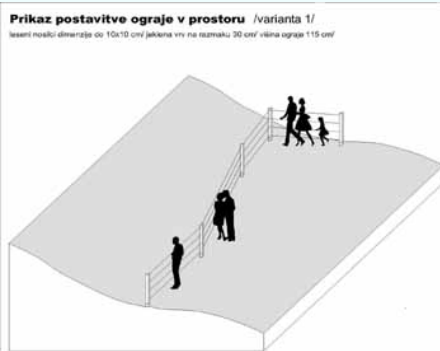
Meadow management



M1: 07/2005 ✓

23

Preventive measures



M1: 01/2006 ✓

24

Conservation of meadows



- Case: Development of communication tools and communication with 400 owners
- The agreements for 96, 6 ha signed



MI: 12/2007 ✖

25

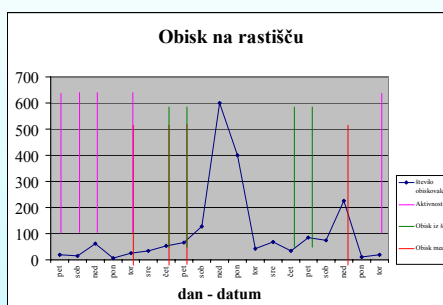
Habitat management



MI: 10/2007 ✖

26

Monitoring



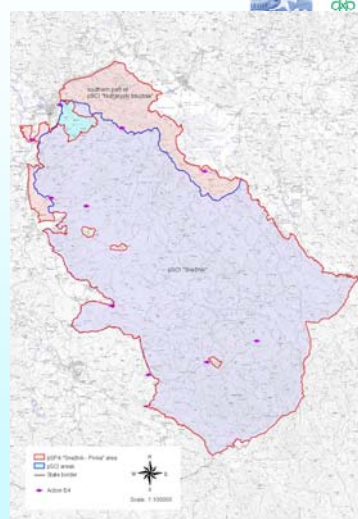
MI: 07/2007 ✖



Pilot area 1: Snežnik



- 49.139 ha
- pSPA: Snežnik – Pivka
- pSCI: Snežnik
- Management plan

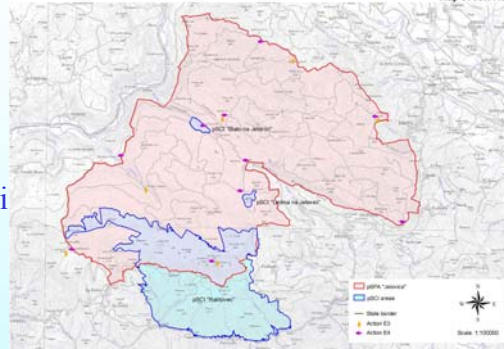




Pilot area 2: Jelovica



- 11.217 ha
- pSPA:
 - Jelovica
- pSCI:
 - Blato na Jelovici
 - Ledina na Jelovici
- Management plan



29

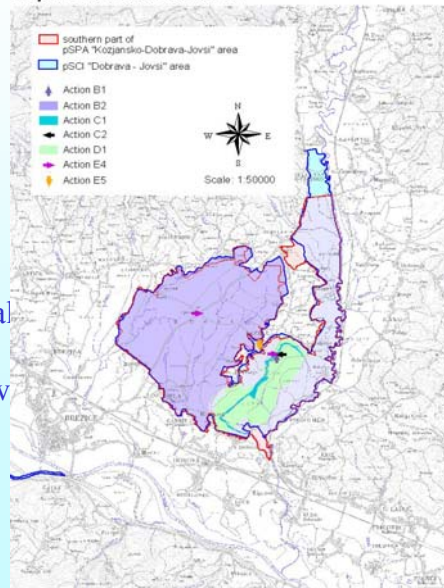


Pilot area 3: Jovsi -Dobrava



- 2.902 ha
- SPA:
 - Kozjansko – Dobrava – Jovsi
- pSCI: Dobrava in Jovsi
 - Management plan
 - The land acquisition
 - Old trees management
 - Improvement of hydrological condition
 - Management of wet meadows
 - Natura 2000 eko-tourist infrastructure

Map of Extended Jovsi Area



Natura 2000 infrastructure



MI: 10/2005 ✓

31

Education trail along the Petelinjek jezero



MOKROTEN TRAVNIK

KAKO DALEČ JE SOSED?

ZNANJE NA SOKROTNEM TRAVNIKU

Obkrog lake na tih je zahtevan kraj. Poskusi skrbiti v krajem prilegajo. Ali znanost, skrbijo, ker v trdnjaki?

MI: 12/2007 ✗

32

Conclusion



- The guidelines for the Natura 2000 management are a good tool for the improvement of the active nature conservation approach
- It helps in common understanding of Natura 2000 aims in the nature conservation and other sectors, among different stakeholders
- It helps in horizontal improvement of management measures

33

Important content of management plan



- State of nature conservation
- Area analyse
- Habitat types, species
- The analyse of historic and existing land use of the areas
- Ecologic asesment, pressures
- Relation to other environemntal fields
- Definition of goals
- Definition of aims and actions
 - habitat types, species,
 - relation to the public, infrastructure
- Public participation
- Stakeholders involvement

Sources, capacities

34

How to reach aims ?



Nature conservation
within the process
with local
communities, owners
and NGO's !!!

35

Thank you !



36


Internet Explorer

Datoteka Urejanje Pogled Priljubljene Qrodja Pomoč

Nazaj Naprej Ustavi Osveži Domov Iskanje Priljubljene Zgodovina Pošta Velikost Natisni Urejanje

aslov http://www.natura2000.gov.si/ Pojdi Povezave

Biseri slovenske narave



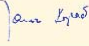
več o projektu
zakonodaja
mednarodni projekti
območja
vprašanja
oglasna deska
publikacije
fotogalerija
povezave
pišite nam




Dražavna c. 40
1000 Ljubljana
slovenija
01 478 74 00

Ohranjena narava Slovenije predstavlja biser, ki je naša dediščina vnučkom. V mnogih državah je narava izrazito manj pestra, pogosto pa tudi precej uničena.

To, kar smo doslej uspeli ohraniti, bomo nadgradili z vključitvijo v evropsko mrežo posebej varovanih območij - Natura 2000. S tem postaja bogata narava Slovenije, kjer sicer domuje najmanj 15 tisoč živalskih vrst, 6 tisoč rastlinskih vrst in 5 tisoč vrst gliv, tudi "uradno" del skupne evropske dediščine.

Mag. Janez Kopač,
minister za okolje, prostor in energijo



Več informacij:
<http://www.natura2000.gov.si>

Interaktivni zemljevid:
<http://kremen.arso.gov.si/NVAtlas/ewmap.asp>

AKTUALNO...

Predlog območij Natura 2000

- [Zgibanka Goričko, kjer si narava in človek podajata roko](#)
- [Zgibanka Skriti biseri narave](#)
- [Zgibanka Ljubljansko barje - skrito bogarstvo na našem pragu](#)
- [Zgibanka Mura, kjer bi lahko lebdela duša](#)